

Brighten Every Moment

LUMISQUARE SERIES

Outdoor LED Displays



Front & Rear Maintenance



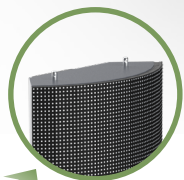
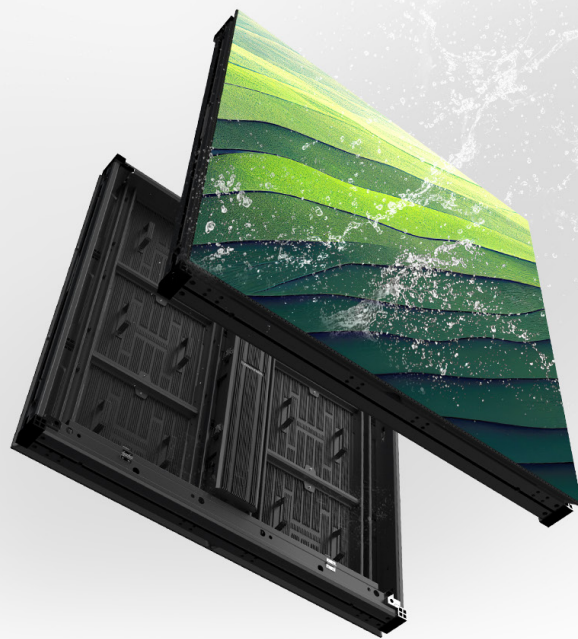
Energy Saving



Aluminum Profile

Robust and Stable Performance

Higher Protection Level: Fully-enclosed bottom shell enables IP67 front protection and IP66 rear protection



Corner Bar Cabinet

- Seamlessly joins two LED cabinets for an **outer right angle** installation
- Eliminates vertical seams for a smooth visual effect

Energy Saving

- **Top-brand LED lamp beads** provide high luminous efficiency
- **Common cathode** connection
- **40% to 50%** energy savings



Easier Installation

- Supports **cordless and waterproof** connection
- **Aviation plugs** ensure easier installation



Application Scenarios



Billboard



Outdoor Glasses-Free 3D



Building Facade

Key Spec

	DS-D4257CO-2APA	DS-D4266CO-2APA	DS-D4280CO-2APA	DS-D42A0CO-2APA
Pixel Structure	SMD Triad LED			
Pixel Pitch (mm)	5.71	6.67	8	10
Module Composition (W × H)	2×3			
Module Structure	Aluminum Shell			
Cabinet Dimension (W × H × D, mm)	960 × 960 × 100 (37.80" × 37.80" × 3.94")			
Cabinet Resolution (W × H)	168 × 168	144 × 144	120×120	96 × 96
Cabinet Weight	27.15 kg(59.86 lb)			
Pixel Density (dots/m ²)	28224	22500	15625	10000
Cabinet Material	Aluminum profile			
Maintenance Method	Front/Rear Maintenance			
Protection Level	IP67(F)/IP66(R)			
Brightness (nits)	6500			
Viewing Angle	160°(H)/130°(V)			
Contrast Ratio	8000:1			
Peak Consumption (W/m ²)	480			
Average Consumption (W/m ²)	160			
Refresh Rate (Hz)	3840			

