

Brighten Every Moment

ULTRA SERIES

Indoor LED Displays



True-to-Life Display



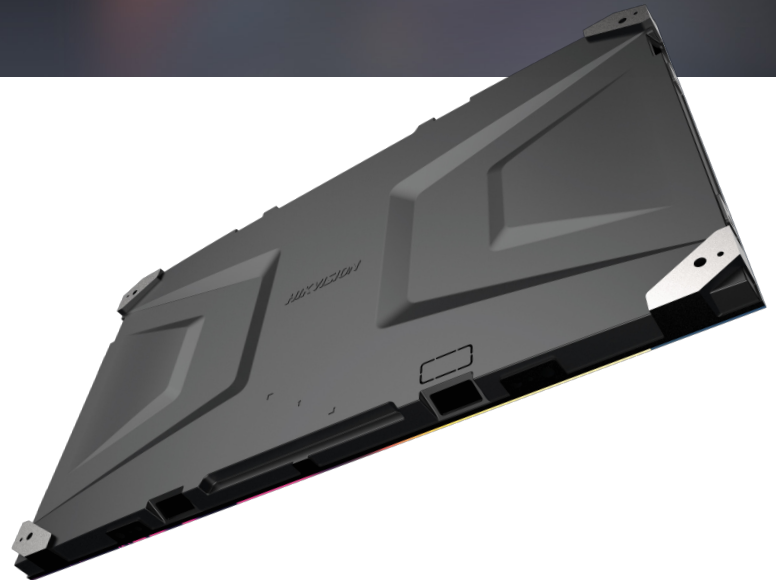
Flip-Chip COB



Energy-Saving

Superior Cabinet

- **Super Slim – 29.3 mm**
Combining elegance and robustness
- **Ultra Light – 17 kg/m²**
Facilitating effortless installation
- **Exceptionally Robust**
Tensile strength of up to 2,000N
Splicing of 50 rows / 17 m, no deformation



Convenient Splicing & Installation

- **Big Board – 600*337.5 mm, 16:9**
More accurate and easier splicing, compatible with diverse resolutions
- **Flexible Wiring**
Cascading both horizontally and vertically, saving wiring costs
- **Removable Back Frame Plate**
With cables passing through, preventing tangled cords at the screen bottom

Unique Advantages



True-to-Life Display Performance

- High contrast ratio, extreme black, low glare, and expansive color gamut
- High color consistency and image denoising effect



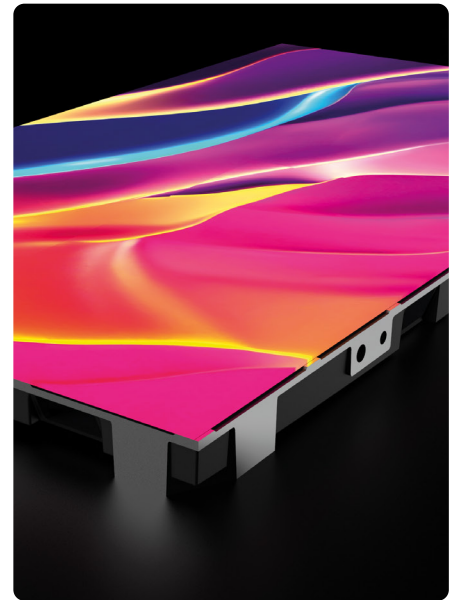
Stable and Energy-Saving Flip-Chip COB

- Higher luminous efficiency and lower power consumption
- Superior stability, significantly mitigating oxidation and pixel failure



Single-Cabinet Calibration

- Easy installation of cabinets in any desired position
- No additional calibration required when replacing spare lamp boards
- Facilitating flexible warehousing and maintenance



Application Scenarios



Command Center



Meeting Room



Studio



Auditorium & Lecture Hall

Key Spec

	DS-D4009BW-2FC	DS-D4012BW-2FC	DS-D4015BW-2FC
Pixel Structure	Flip-chip COB		
Pixel Pitch (mm)	0.9375	1.25	1.5625
Cabinet Dimension (W × H × D, mm)	600 × 337.5 × 29.3 (23.622" × 13.287" × 1.154")		
Cabinet Resolution (W × H)	640 × 360	480 × 270	384 × 216
Cabinet Weight	3.4 Kg (7.496 lb)		
Cabinet Material	Aluminium die casting		
Protection Level	IP65 (Module)		
Brightness (nits)	600		
Viewing Angle	160°(H)/160°(V)		
Contrast Ratio	15000:1		
Peak Consumption (W/m ²)	≤ 360	≤ 300	≤ 300
Refresh Rate (Hz)	3840		
Grey Level (bit)	16		



www.hikvision.com
support@hikvision.com

Search Hikvision

