

Brighten Every Moment

SOLID SERIES

Indoor LED Displays



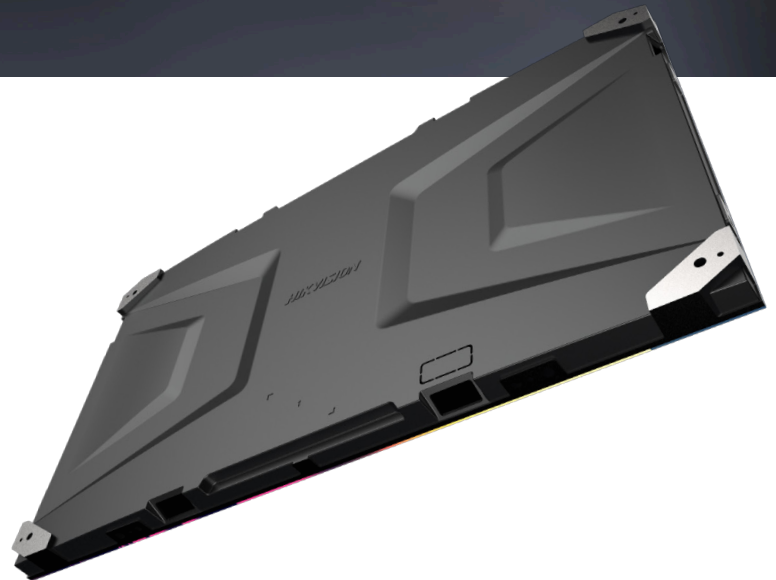
Excellent Air Tightness



Cold Screen

Superior Cabinet

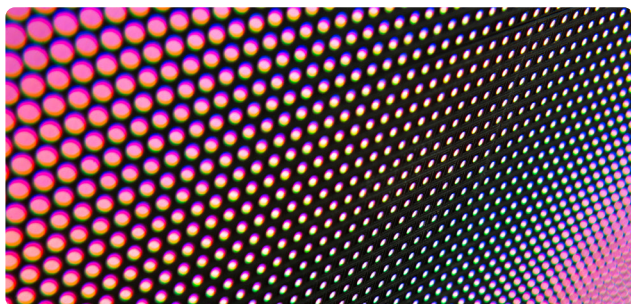
- **Super Slim – 29.5mm**
Combining elegance and robustness
- **Ultra Light – 17.3 kg/m²**
Facilitating effortless installation
- **Exceptionally Robust**
Tensile strength of up to 2,000N
Splicing of 50 rows / 17 m, no deformation



Convenient Splicing & Installation

- **Big Board – 600*337.5 mm, 16:9**
More accurate and easier splicing, compatible with diverse resolutions
- **Flexible Wiring**
Cascading both horizontally and vertically, saving wiring costs
- **Removable Back Frame Plate**
With cables passing through, preventing tangled cords at the screen bottom

Unique Advantages



Top Brand LED Lamp

- Higher luminous efficiency boosts maximum brightness
- Reliable airtightness reduces oxidation, minimizing open circuits and dead pixels



Flip-Chip Cold Screen *

- Energy use reduced by over 55%
- Surface temperature drops by 30%
- Nearby air temperature drops by 20°

Application Scenarios



Command Center



Meeting Room



Studio



Auditorium & Lecture Hall

Key Spec

	DS-D4012NW-2F	DS-D4015NW-2F	DS-D4012CW-2F	DS-D4015CW-2F	DS-D4018CW-2F
Pixel Structure	SMD Triad LED with Top level lamp		SMD triad LED		
Pixel Pitch (mm)	1.25	1.56	1.25	1.56	1.8
Cabinet Dimension (W × H × D, mm)	600 × 337.5 × 295 (23.622" × 13.287" × 1.161")				
Cabinet Resolution (W × H)	480 × 270	384 × 216	480 × 270	384 × 216	240 × 136
Cabinet Weight	3.4 Kg (7.496 lb)				
Cabinet Material	Aluminium die casting				
Protection Level	IP60 (Front)				
Brightness (nits)	800		600		
Viewing Angle	160°(H)/160°(V)				
Contrast Ratio	3000:1				
Peak Consumption (W/m²)	≤ 460	≤ 390	≤ 460	≤ 390	≤ 400
Refresh Rate (Hz)	3840				
Grey Level (bit)	16				

* Customized



www.hikvision.com
support@hikvision.com

Search Hikvision

