

Value Series

Hikvision Interactive Flat Panel Display

Advance collaboration to a new level



Value Series Highlights

Discover the Value series of Hikvision's interactive flat panel displays, featuring user-friendly whiteboard software, versatile projection options, and Input Method Editor (IME). The Value series excels in providing efficient solutions for education, enabling smooth transitions between tasks, and facilitating seamless remote meetings.

Login via RFID & USB

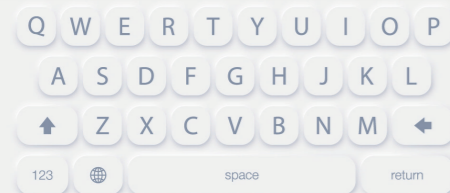
Supports **password**, **RFID card**, and **USB disk** logins, and allows up to 10 user accounts.



Multi-language IME

Pre-installed input method **supports 31 languages**, sync with the system language settings. IME can be freely moved around.

Supports **31** Languages



Quick access buttons

Equipped with 7 physical buttons for quick operations such as power on/off, volume adjustment, homepage access, return, settings, and a customizable button for user-defined functions.



Flexible and accurate touch

Supports **40-point infrared touch** with a response time of less than **5 ms** and touch accuracy of ± 1 mm.



High-Performance Configuration

Side interfaces

- 1*HDMI input,
- 1*audio input,
- 1*audio output,
- 1*RS-232,
- 1*touch-USB,
- 2*LAN (100 Mbps),
- 2*USB 2.0

Interfaces on the front

- Equipped with 1*HDMI input, 3*USB 3.0 and 1*Type-C for data transmission

NFC module

- Use RFID card to log in to user's own account

Quick access buttons

- Power on/off, volume adjustment, homepage access, return, settings, and a customizable button for user-defined functions

Elegant appearance

- Black metal frame treated with sandblasting

Powerful hardware and system

- 4-core CPU, 8G RAM + 64 GB ROM, Android 13.0

Convenient IR Control

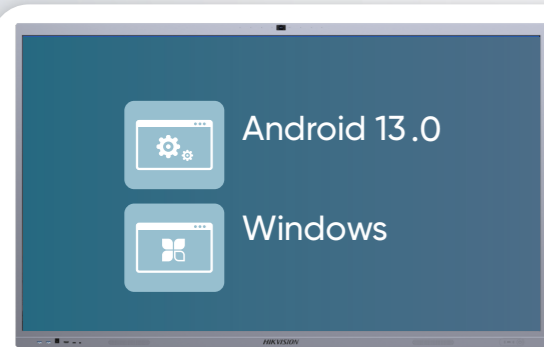
- Control the interactive display remotely.

Built-in loudspeakers

- Built-in 2*20W loudspeakers



Dual-System Switchover



Users can switch between their dual systems with just one click.

- Android 13.0 built in by default
- Optional OPS for Windows compatibility

Flexible Projection



Simultaneous Projection of **Up to 4** Devices

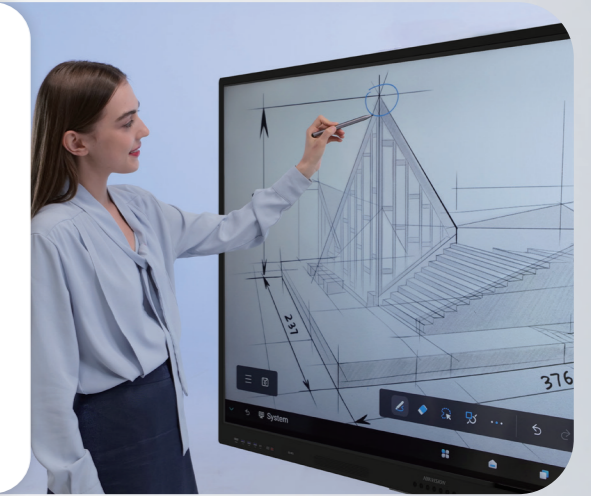
Flexible projection via the WonderCast app, AirPlay, NFC, and dongle. Users will enjoy the simultaneous projection of up to 4 devices. Reverse projection supports the integration between laptops and interactive flat panel displays.



Digital Whiteboard

Hikvision's interactive flat panel displays support smart whiteboard functionality with intelligent handwriting recognition and various built-in tools.

Built-in browser and multiple file-read capabilities enhance the whole experience.



Smooth writing experience

Smooth writing (40 point) with smart recognition and simultaneous multi-person writing

Diverse assistant tools

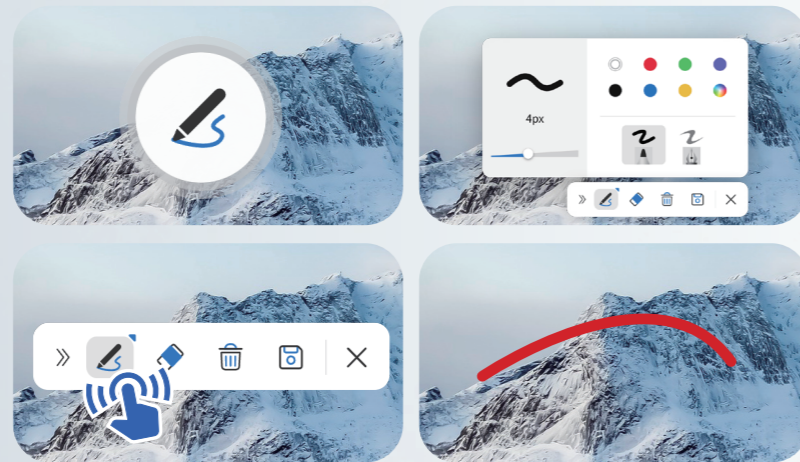
Support compasses, rulers, triangular rulers, protractors, tables, and flow charts



Flexible Annotation

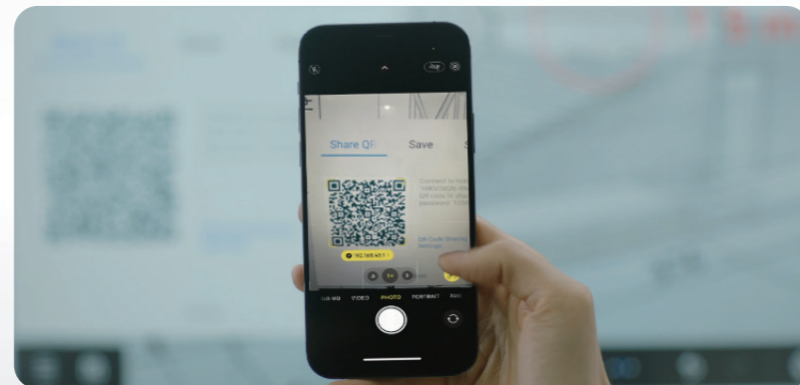
One-tap activation & powerful features

- A drag-and-drop icon to activate the annotation mode, movable to any positions and accessible across all channels
- Supports brush width & color settings, multiple-touchpoint annotation, and both Android and Windows systems



Easy saving and sharing

Annotation content can be saved locally or on a USB flash drive, and shared via code scanning



Useful Tools

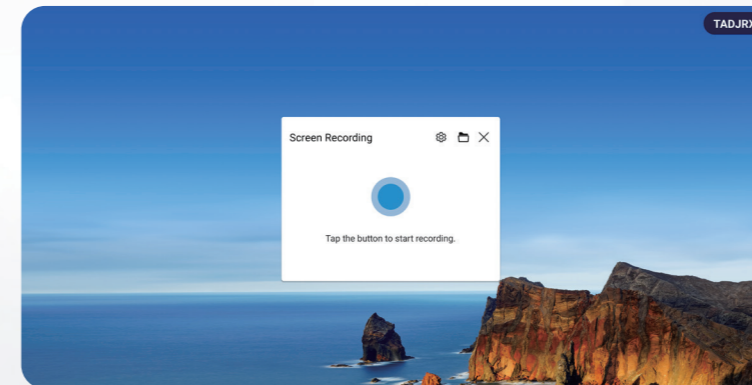
Screenshot

Users can capture either **a specified zone or the full screen**. Screenshots can be saved or imported into the whiteboard software.



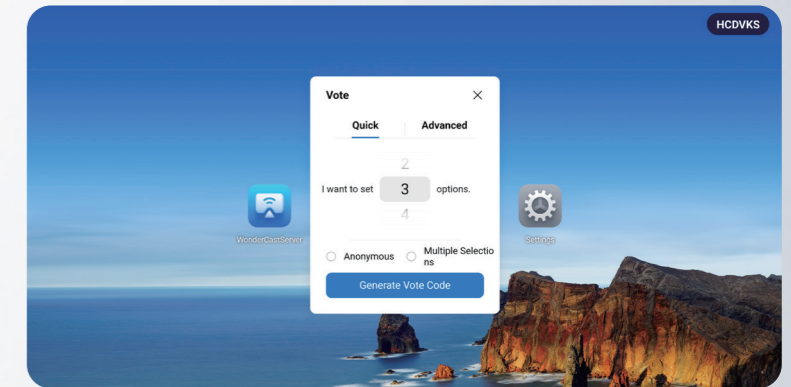
Screen recording

Capable of capturing **both the video and audio output** of the IFPD.



Voting

With **up to 10 choices for a vote**, the participants scan a QR code to join easily. A pie chart of results will be generated and imported into the whiteboard software.



Touch lock

Designed to **disable the touch screen function**, preventing accidental touches in specific situations.



Energy-Saving and Adaptable



Energy-saving mode

The energy-saving mode turns off the backlight (without powering off the entire device), reducing power consumption by over 90%.



Automatic standby mode

When the display's inactive time exceeds the limit, the device automatically enters the standby mode.



Screen brightness adjustment

It supports automatic environmental light detection, adjusting screen brightness accordingly.



Temperature monitoring

Intelligent temperature monitoring alerts users if the temperature exceeds the limit.



Classroom Hub Solution

Learning institutions are continually moving toward informatization in education. In addition, students growing up in a technological world are eager for more immersive learning experiences and better educational resources.

Leveraging professional, AI-enabled cameras and lightweight software, Hikvision's Classroom Hub Solution overcomes a variety of challenges by offering remote learning and multi-classroom learning, extending real classrooms to digital, virtual classrooms, bridging all kinds of gaps between teaching and learning.



IFPD Product Showcase

Product Model		DS-D5B86RB/EL	DS-D5B75RB/EL	DS-D5B65RB/EL
Installation	Screen Size	86 inch	75 inch	65 inch
	Backlight	DLED	DLED	DLED
Display	Pixel Pitch	0.165 (H) × 0.494 (V) mm	0.143 (H) mm × 0.430 (V) mm	0.124 (H) × 0.372 (V) mm
	Resolution	3840 × 2160 @60 Hz	3840 × 2160 @60 Hz	3840 × 2160 @60 Hz
	Brightness	400 cd/m ² (Typ.)	400 cd/m ² (Typ.)	400 cd/m ² (Typ.)
	Color Depth	10 bit	10 bit	10 bit
	Display Color	1.07G	1.07G	1.07G
	Response Time	5ms	5ms	5ms
	Panel Type	VA	IPS	VA
	Contrast Ratio	5000:1 (Static) 30,000:1 (Dynamic)	1200:1 (Static) 15,000:1 (Dynamic)	5000:1 (Static) 30,000:1 (Dynamic)
	Color Gamut	72% NTSC (CIE1931) (Typ.)	72% NTSC (CIE1931) (Typ.)	72% NTSC (CIE1931) (Typ.)
	Refresh Rate	60 Hz	60 Hz	60 Hz
	Viewing Angle	178°(H)/178°(V)	178°(H)/178°(V)	178°(H)/178°(V)
	Aspect Ratio	16:09:00	16:09:00	16:09:00
	Surface Haze	25% Haze	25% Haze	25% Haze
	Display Area	1895.04 mm × 1065.96 mm	1649.66 mm × 927.94 mm	1428.48 mm × 803.52 mm
	Working Duration	7 × 16H	7 × 16H	7 × 16H
	Surface Hardness	9H (Pencil), 7 (Mohs)	9H (Pencil), 7 (Mohs)	9H (Pencil), 7 (Mohs)
	Surface Glass	3.2 mm Anti-Glare Glass	3.2 mm Anti-Glare Glass	3.2 mm Anti-Glare Glass
Transmittance	88% ± 3	88% ± 3	88% ± 3	
Lifespan	50,000 hours	50,000 hours	50,000 hours	
Touch	Type	Infrared Touch Screen	Infrared Touch Screen	Infrared Touch Screen
	Touch Point	40-point multi-touch	40-point multi-touch	40-point multi-touch
	Touch Response Time	< 5 ms	< 5 ms	< 5 ms
	Minimum Touch Object	≥ 2 mm (≥ 90% touching area)	≥ 2 mm (≥ 90% touching area)	≥ 2 mm (≥ 90% touching area)
	Touch Precision	± 1 mm (≥ 90% touching area)	± 1 mm (≥ 90% touching area)	± 1 mm (≥ 90% touching area)
	Touch Resolution	32767 × 32767	32767 × 32767	32767 × 32767
Built-in System	Operation System	Android 13.0	Android 13.0	Android 13.0
	Memory	8 GB	8 GB	8 GB
	Built-in Storage	64 GB	64 GB	64 GB
	CPU	Cortex-A55 × 4 (1.92GHz)	Cortex-A55 × 4 (1.92GHz)	Cortex-A55 × 4 (1.92GHz)
	HDCP Version	Support 1.4/2.2/2.3	Support 1.4/2.2/2.3	Support 1.4/2.2/2.3
	GPU	Mali-G52 MP2 (2EE)	Mali-G52 MP2 (2EE)	Mali-G52 MP2 (2EE)

Product Model		DS-D5B86RB/EL	DS-D5B75RB/EL	DS-D5B65RB/EL	
Internal Function	Loudspeaker	Built-in 2 × 20 W	Built-in 2 × 20 W	Built-in 2 × 20 W	
	Speaker Frequency	200-20Khz	200-20Khz	200-20Khz	
	Bluetooth	Built-in BLE (Bluetooth Low Energy) module supports Bluetooth 5.2	Built-in BLE (Bluetooth Low Energy) module supports Bluetooth 5.2	Built-in BLE (Bluetooth Low Energy) module supports Bluetooth 5.2	
	NFC	Support card reader	Support card reader	Support card reader	
	Light Sensor	Yes	Yes	Yes	
	Interface	Video & Audio Input	HDMI In (HDMI 2.0) × 2, Audio In × 1	HDMI In (HDMI 2.0) × 2, Audio In × 1	HDMI In (HDMI 2.0) × 2, Audio In × 1
Video & Audio Output		Audio Out × 1	Audio Out × 1	Audio Out × 1	
Control Interface		TOUCH-USB 2.0 × 1, RS232 × 1	TOUCH-USB 2.0 × 1, RS232 × 1	TOUCH-USB 2.0 × 1, RS232 × 1	
Network Interface		LAN	LAN (100 Mbps) × 2	LAN (100 Mbps) × 2	LAN (100 Mbps) × 2
		WiFi AP&Station	2.4G/5G	2.4G/5G	2.4G/5G
		WiFi AP	IEEE 802.11 a/b/g/n/ac 2 × 2 MIMO (2.4 GHz and 5 GHz) authentication protocols WEP, WPA, WPA2, PSK and 802.1X EAPLAN (100 Mbps) × 2	IEEE 802.11 a/b/g/n/ac 2 × 2 MIMO (2.4 GHz and 5 GHz) authentication protocols WEP, WPA, WPA2, PSK and 802.1X EAP	IEEE 802.11 a/b/g/n/ac 2 × 2 MIMO (2.4 GHz and 5 GHz) authentication protocols WEP, WPA, WPA2, PSK and 802.1X EAP
		WiFi Station	IEEE 802.11 a/b/g/n/ac/ax 1 × 1 MIMO (2.4 GHz and 5 GHz) authentication protocols WEP, WPA, WPA2, PSK and 802.1X EAP	IEEE 802.11 a/b/g/n/ac/ax 1 × 1 MIMO (2.4 GHz and 5 GHz) authentication protocols WEP, WPA, WPA2, PSK and 802.1X EAP	IEEE 802.11 a/b/g/n/ac/ax 1 × 1 MIMO (2.4 GHz and 5 GHz) authentication protocols WEP, WPA, WPA2, PSK and 802.1X EAP
Data Transmission Interface		USB 3.0 × 3, USB 2.0 × 2, Type-C × 1 (Type-C supports USB 2.0)	USB 3.0 × 3, USB 2.0 × 2, Type-C × 1 (Type-C supports USB 2.0)	USB 3.0 × 3, USB 2.0 × 2, Type-C × 1 (Type-C supports USB 2.0)	
Power		Power Supply	100 to 240 VAC, 50/60 Hz	100 to 240 VAC, 50/60 Hz	100 to 240 VAC, 50/60 Hz
		Standby Consumption	≤ 0.5 W	≤ 0.5 W	≤ 0.5 W
	Max. Consumption	326 W	217 W	184 W	
	Average Consumption	268 W	175 W	153 W	
General	Product Dimensions	1960.44 mm × 1164.69 mm × 82.5 mm	1713.23 mm × 1025.53 mm × 82.5 mm	1491.88 mm × 901.59 mm × 82.3 mm	
	Package Dimensions (W × H × D)	2157 mm × 1345 mm × 223 mm	1907 mm × 1160 mm × 223 mm	1662 mm × 1062 mm × 223 mm	
	VESA	800 mm × 600 mm (4 × M8-25 mm)	800 mm × 400 mm (4 × M8-25 mm)	600 mm × 400 mm (4 × M8-25 mm)	
	Net Weight	59.71 kg	49.15 kg	31.2 kg	
	Gross Weight	79.0 kg	63.0 kg	45.6 kg	
	Accessory	Wall mount bracket, hook, user manual, stylus × 2, packing list, 1.5 m power cable (European standard), remote controller	Wall mount bracket, hook, user manual, stylus × 2, packing list, 1.5 m power cable (European standard), remote controller	Wall mount bracket, hook, user manual, stylus × 2, packing list, 1.5 m power cable (European standard), remote controller	
Working Environment	Working Temperature	0 °C to 40 °C (32 °F to 104°F)	0 °C to 40 °C (32 °F to 104°F)	0 °C to 40 °C (32 °F to 104°F)	
	Working Humidity	10%-90% RH	10%-90% RH	10%-90% RH	