

HOW TO

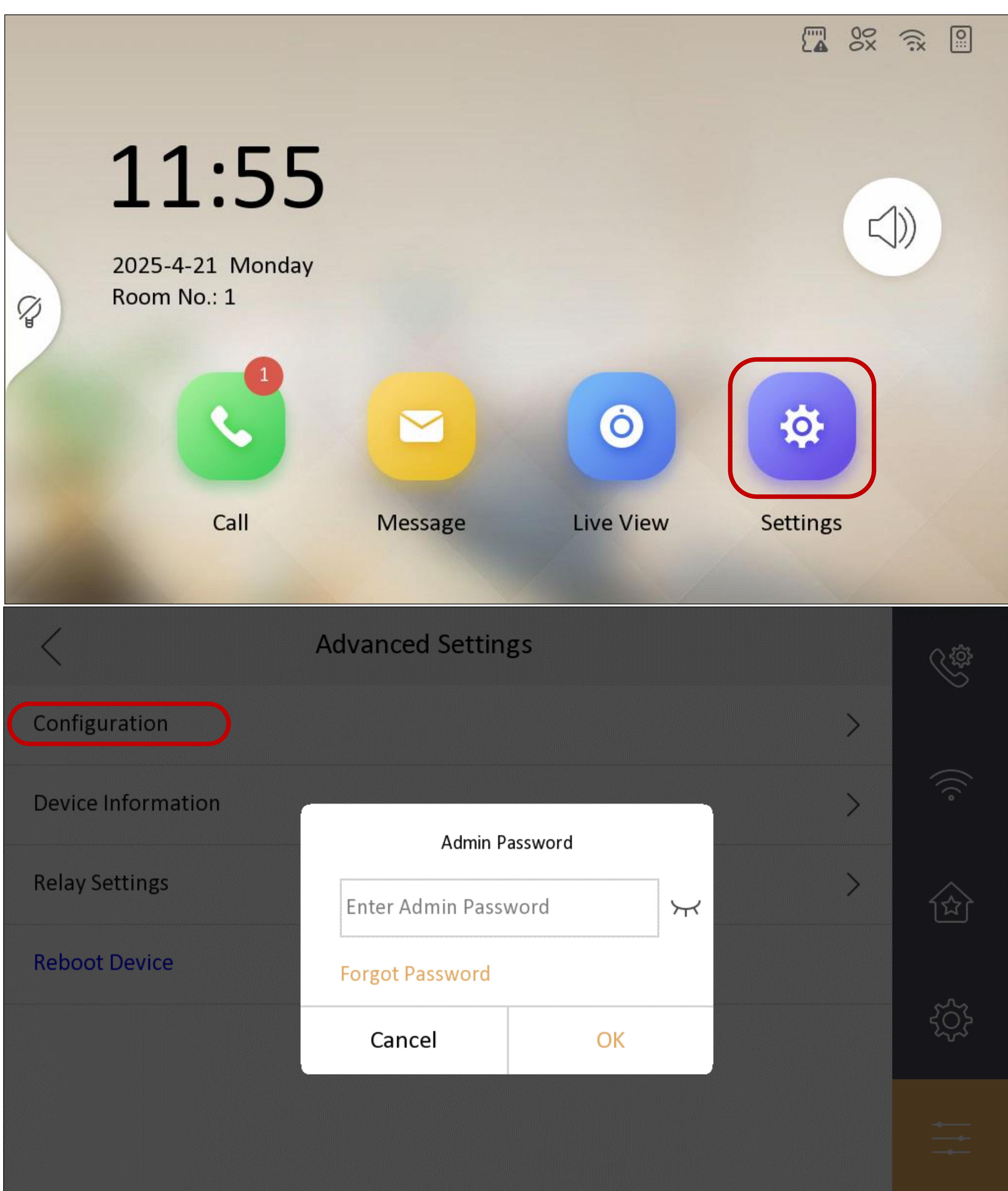
Register Indoor Extension to Indoor Station – Via Local GUI

Here we take DS-KH8520-WTE1 and DS-KH6320-WTDE1 as an example.
We will show you how to:

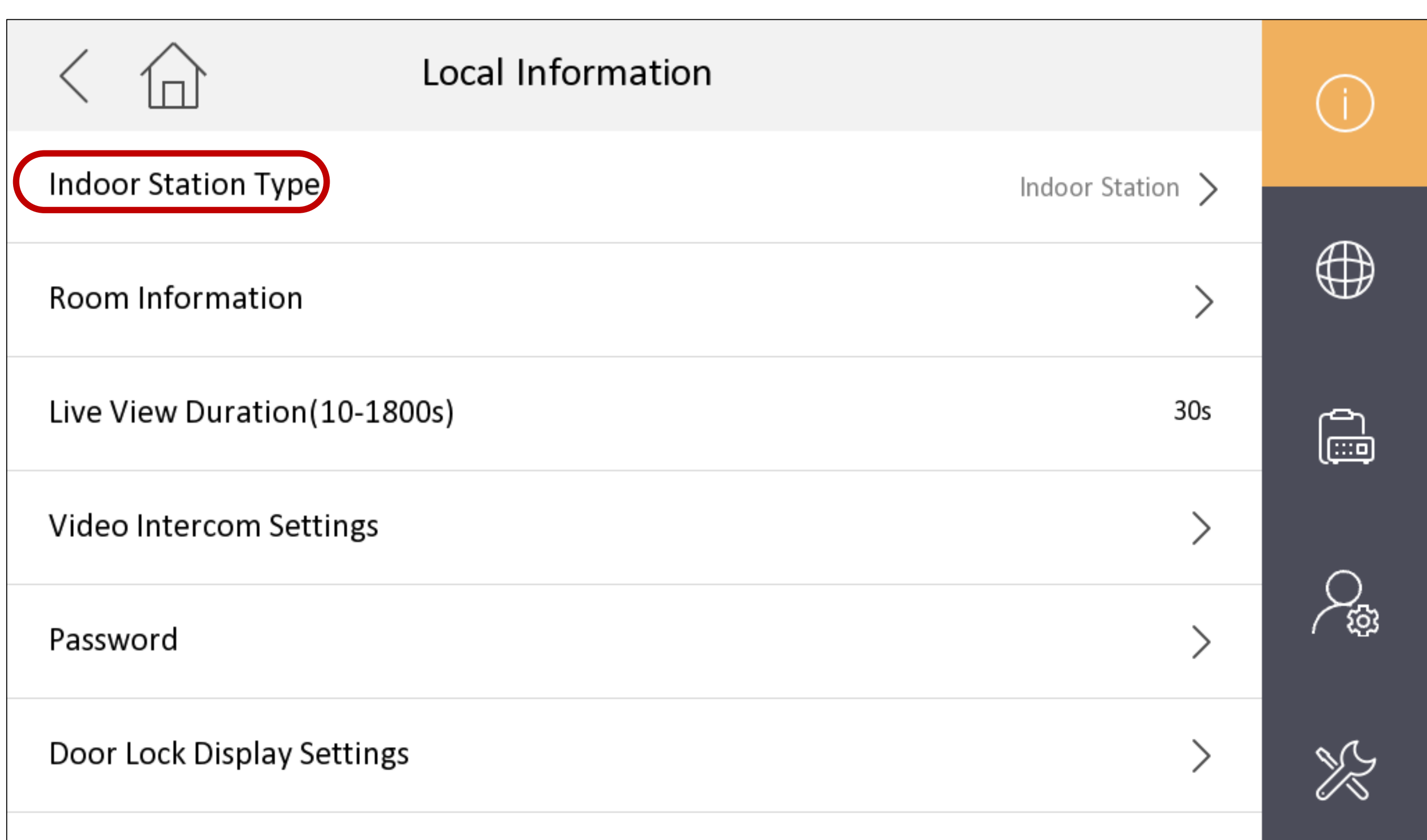
- ① Set DS-KH8520-WTE1 as indoor extension
- ② Register DS-KH8520-WTE1 to DS-KH6320-WTDE1

Change Indoor Station Type

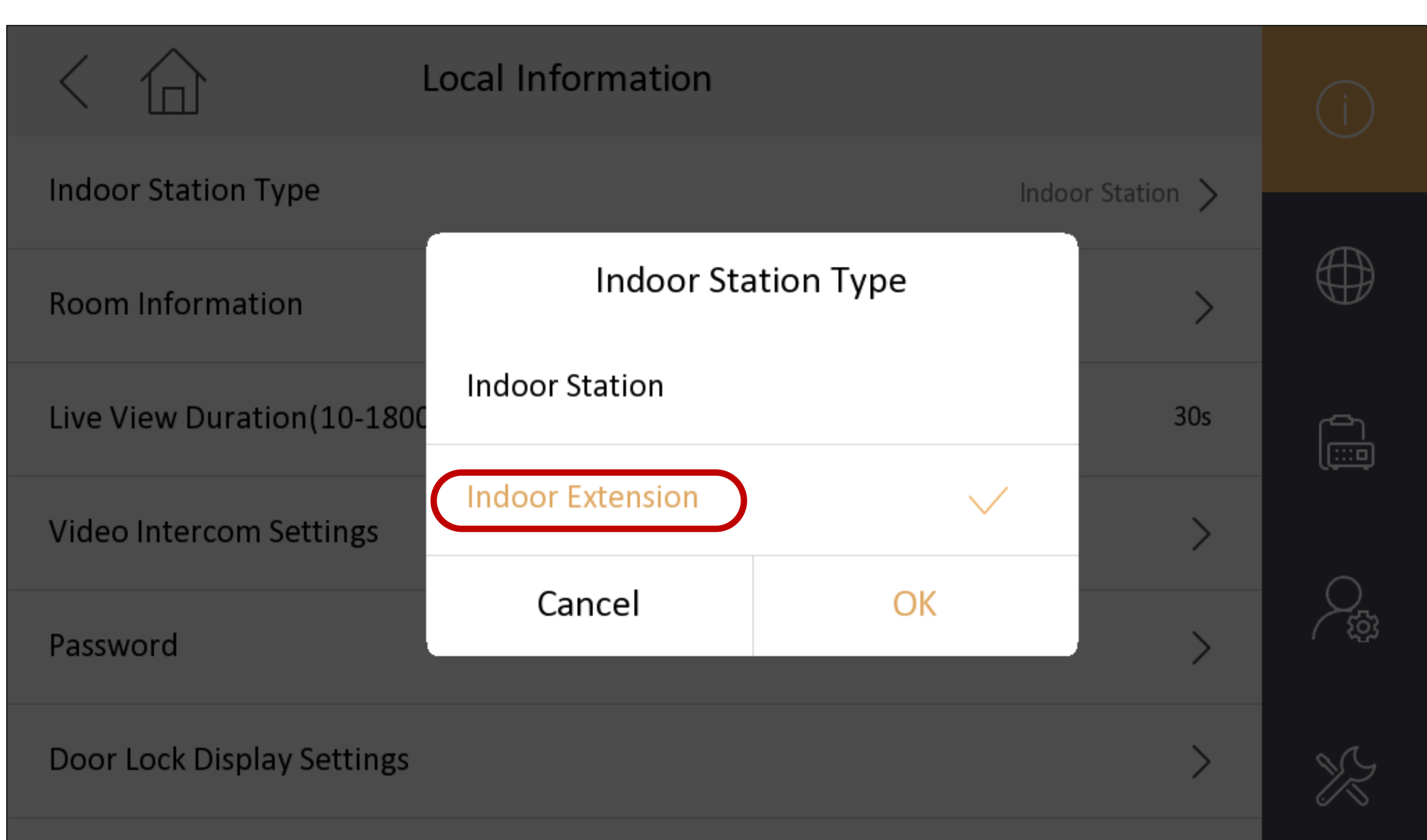
STEP1: Go to Settings > Configuration, enter device password



STEP2: Tap Indoor Station Type and select Indoor Extension.

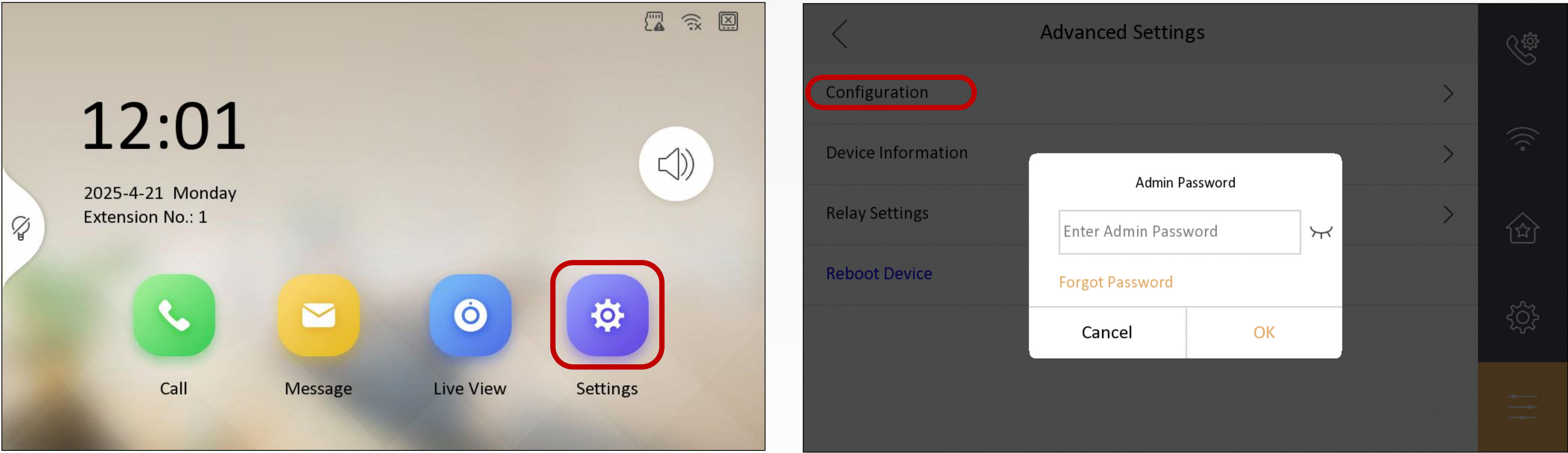


STEP3: Tap OK to confirm the setting.

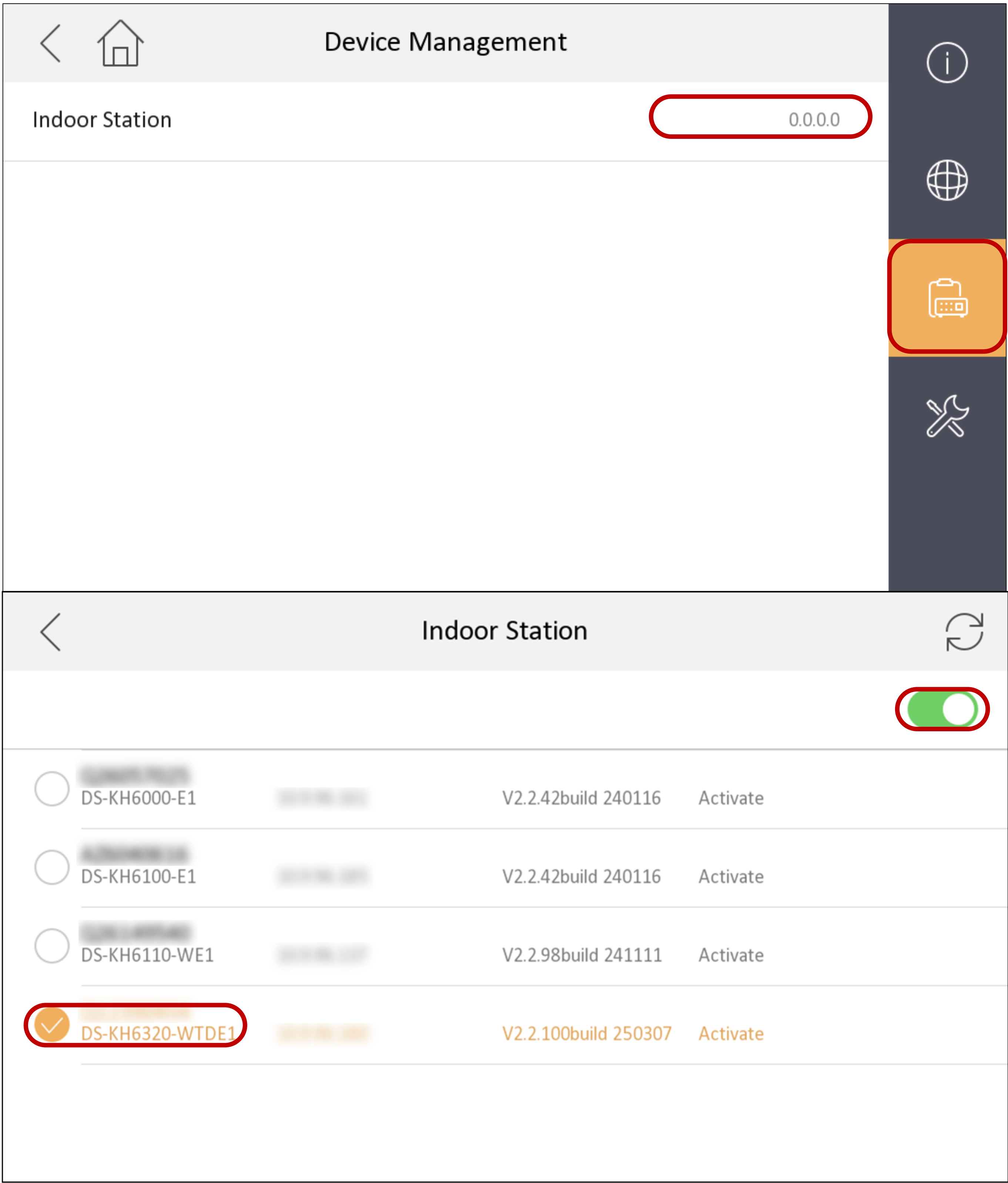


Register Indoor Extension to Indoor Station

STEP1: Back to to Settings > Configuration, enter device password

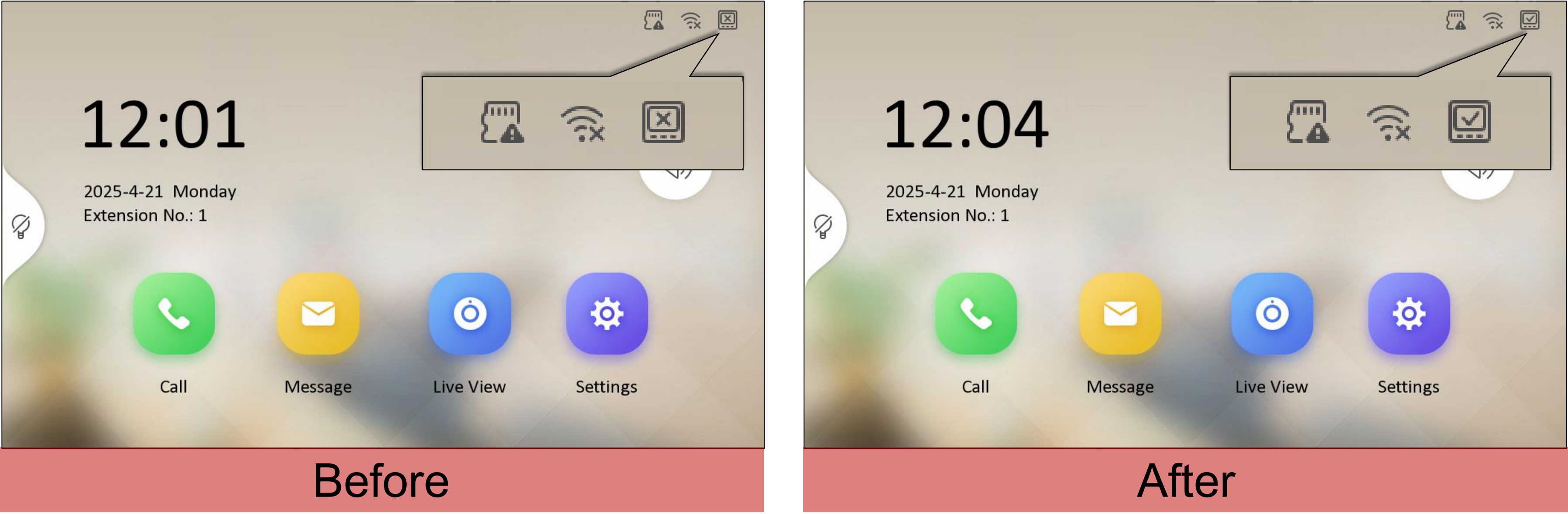


STEP2: Go to Device Management and tap IP address to select station. Make sure that your devices are connect with the same LAN



Double Check

Once registered successfully, the indoor extension status icon will change.



And you can see indoor extension information on indoor station.

