



## **How to batch register indoor station to door station**

<b>Title:</b>	How to batch register indoor station to door station	<b>Version:</b>	v1.0	<b>Date:</b>	2/11/2020
<b>Product:</b>	Video Intercom Protocol v2.0			<b>Page:</b>	1 of 3

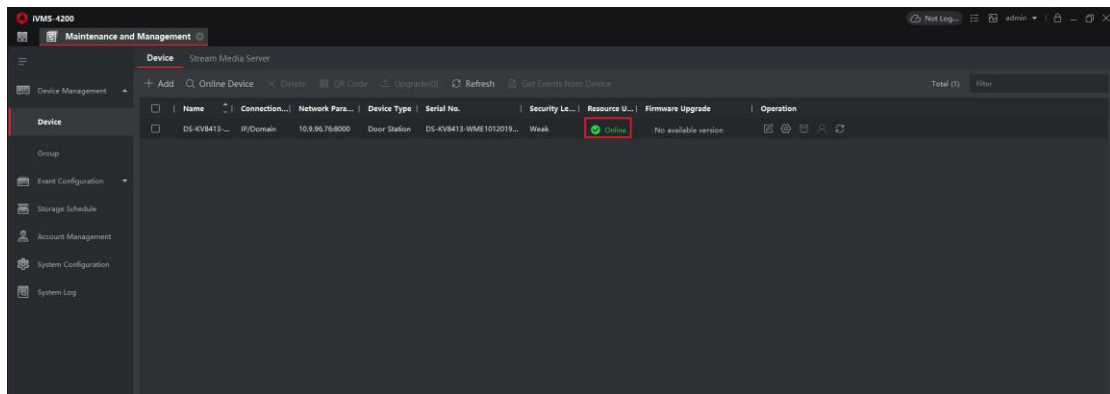
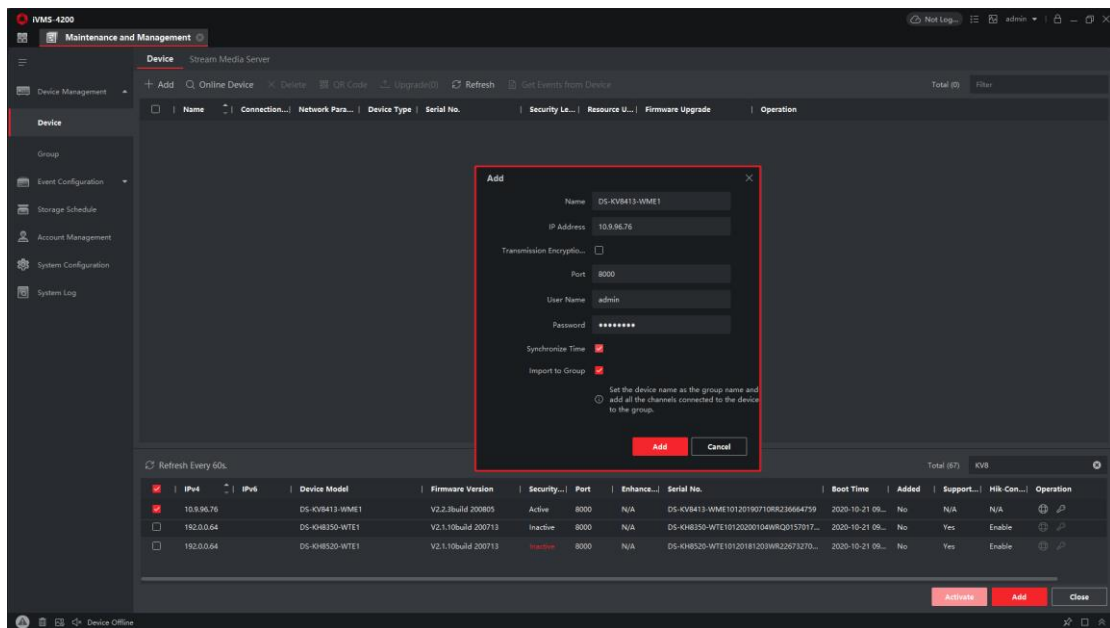
## Preparation

1. This guide takes Indoor station DS-KH8350-WTE1, DS-KH8520-WTE1 and Door station DS-KV8413-WME1(B) as examples to introduce how to batch register indoor station to door station.
2. Software: iVMS-4200 Version 3.3.1.8 or above

## How to batch register indoor station to door station

### 1. Add Devices on iVMS-4200

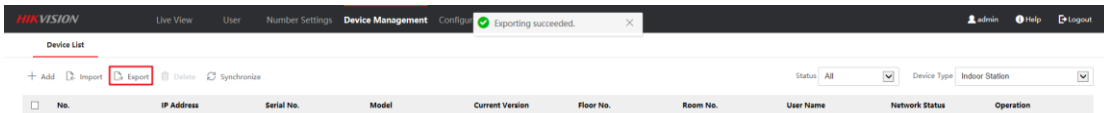
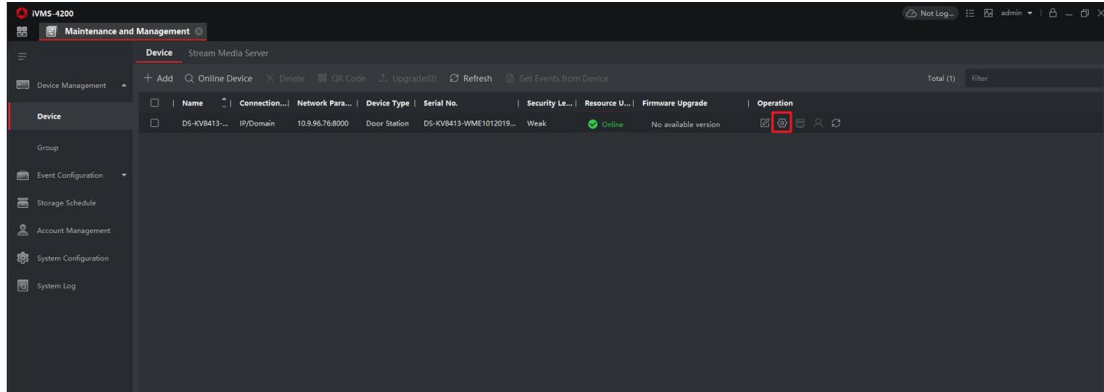
- 1) Search for online devices and add those on iVMS-4200, enter username and password, and then confirm that all devices are online



## 2. Batch register Indoor station to Door station

- 1) When enter the remote configuration of the door station, choose Device Management >

Export, Export the channelConfig files to fill in with the device info.



- 2) The following page shows the info which is necessary for you to complete, all the instructions are given in to top of the list.

Note: you need to select the device type and fill in the info according to each devices, Remember to fill in the Register password option.

The indoor station list on the page is used for data import, so all fields are required. The grey cell represents an example.

Fill in the excel by following rules below.

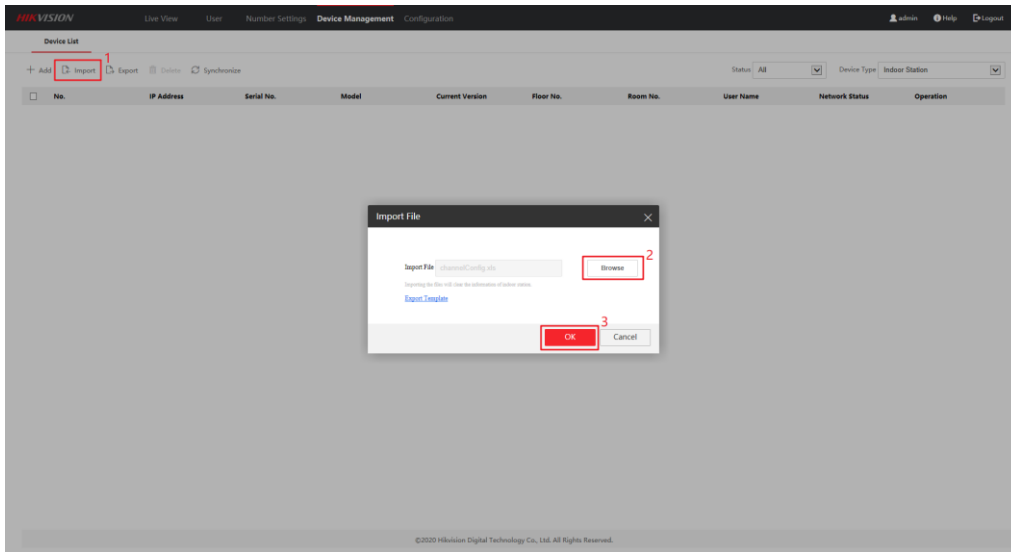
1. Device Type: Indoor Station
2. Serial No. : 9-digit serial No. on the tag of the device
3. Indoor Station Admin Password: Valid password range [8-16]. You can use a combination of numbers, lowercase, uppercase and special character for your password with at least two kinds of them contained.
4. Registration code:Registration code: For adding the device to the main door station. Valid password range [8-16]. You can use a combination of numbers, lowercase, uppercase and special character for your password with at least two kinds of them contained.
5. Floor No. Range: 1 to 999
6. Room No. Range: 1 to 9999
7. IP Address/IP Mask/Gateway: Supports IPv4

Indoor Station List								
Device Type	Serial No.	Admin Password	Regist Password	Floor No.	Room No.	IP Address	IP Mask	Gateway
Indoor Station	226732706	1qaz2wsx	1234567a	1		10.9.96.117	255.255.255.0	10.9.96.254
Indoor Station	Q01570170	1qaz2wsx	1234567a	1	2	10.9.96.118	255.255.255.0	10.9.96.254

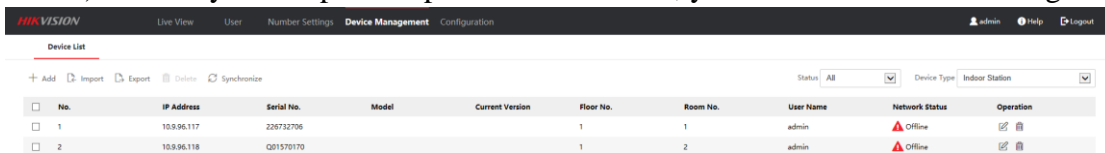
This item must be filled in according to the actual device's serial number

There are the configurations we made to the indoor station

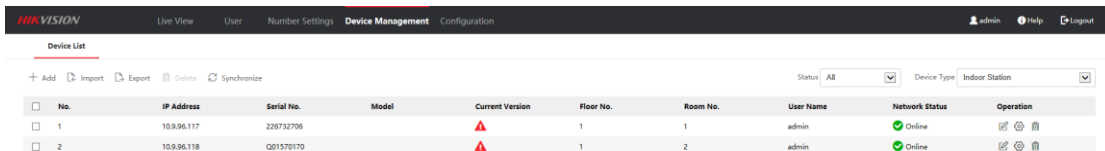
- 3) When you complete the device info, choose Import > Import File > Browse, upload the file.



- 4) When you complete import the device info, you will notice the following situation.



- 5) Make sure the room number which you set before has no conflict with each other, then wait 2 to 8 minutes, the devices will be online.





See Far, Go Further