



How to Set Double-Zone Function in Ax Hybrid Pro 2.0

Title:	How to Set Double-Zone Function in Ax Hybrid Pro 2.0	Version:	v1.0	Date:	03/28/2025
Product:	Ax Hybrid Pro 2.0			Page:	1 of 5

Preparation

1. Ax Hybrid Pro Control Panel DS-PA502-64/96/128, also you can use input expander DS-PM501Z8T4.
2. 2 Wired I/O Detectors, I use 2 DS-PDD15AM-EG2 in the test

How to Set Double-Zone Function in Ax Hybrid Pro 2.0

1. Background

In the wired market, sometimes there are a lot of I/O detectors in the system. To save the cost, we can add 2 detectors in 1 zone input of the control panel or the expanders.

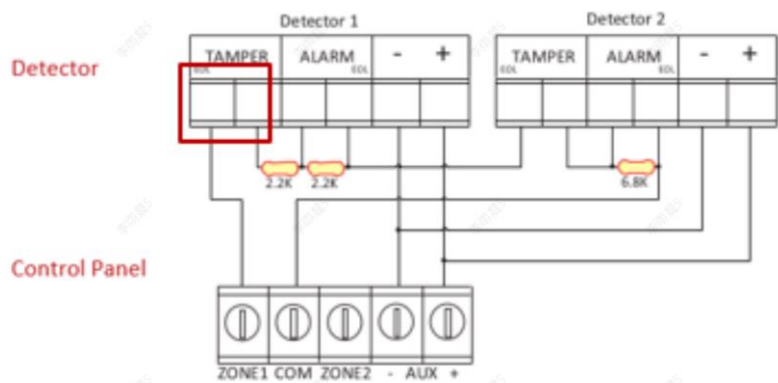
2. Device Wiring

- 1) Choose the proper resistor in the system so that system can tell the alarm 1, alarm 2 and tamper alarm by different resistor values. Now the Ax Hybrid Pro 2.0 supports the resistor value combination as following:

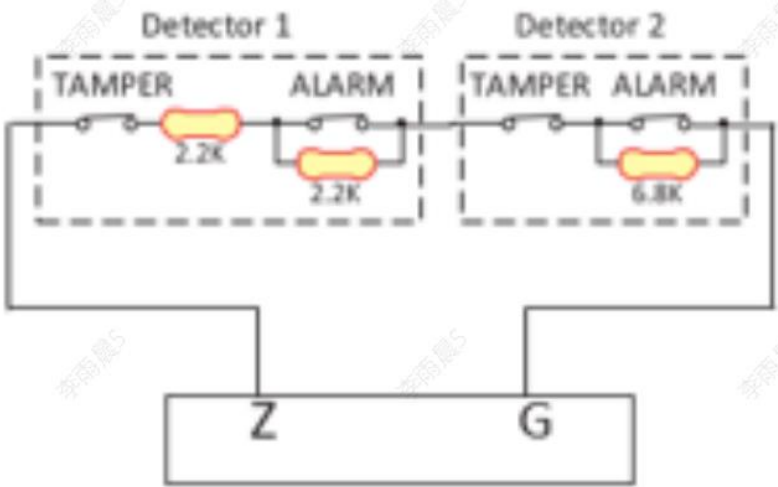
Tamper	Alarm 1	Alarm 2
0K	2K2	8K2
1K	1K	2K2
2K2	2K2	6K8
2K2	4K7	8K2
2K	3K3	6K8
3K9	3K9	6K8

- 2) Wiring Diagram

Title:	How to Set Double-Zone Function in Ax Hybrid Pro 2.0	Version:	v1.0	Date:	03/28/2025
Product:	Ax Hybrid Pro 2.0			Page:	2 of 5



This circuit can be simplified as:

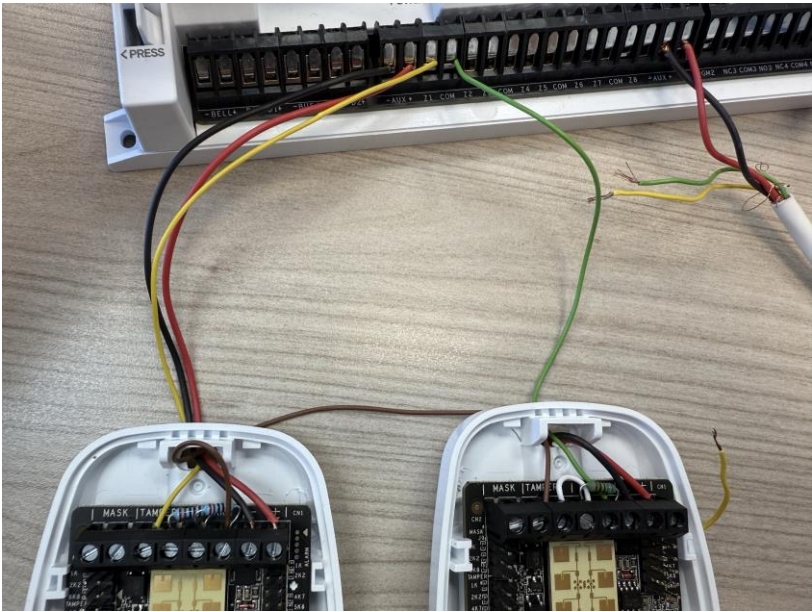


System can tell the different resistor values between Z and G for different alarms.

Detector 1 Alarm	4K4
Detector 2 Alarm	9K
Detector 1&2 Alarm	11.2K
Tamper Alarm (any of detector is tampered)	∞
Normal Status	2K2

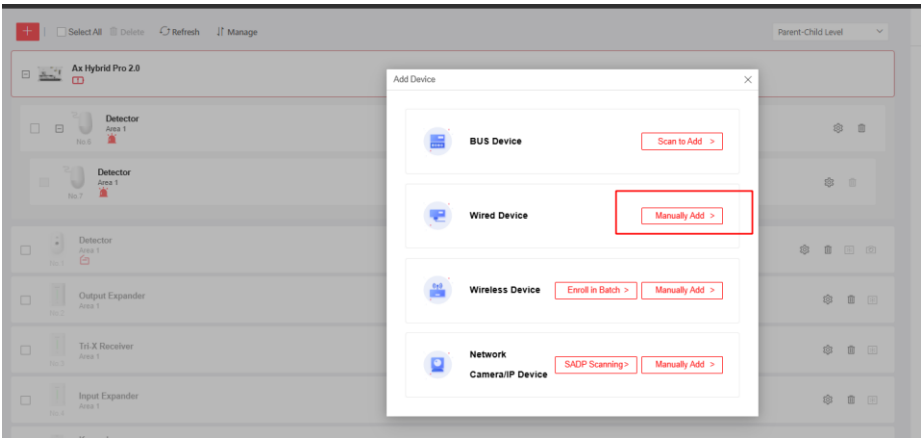
3) Real Wiring Picture

Title:	How to Set Double-Zone Function in Ax Hybrid Pro 2.0	Version:	v1.0	Date:	03/28/2025
Product:	Ax Hybrid Pro 2.0			Page:	3 of 5



3. Detector Configuration

1) Go to web/HPP Portal, Go to ‘Device’ Menu and add the wired device.



2) Choose the wiring mode as Double zone, and configure the correct resistor value, in my test I choose 2k2, 2k2 and 6k8. Save the configuration.

Title:	How to Set Double-Zone Function in Ax Hybrid Pro 2.0	Version:	v1.0	Date:	03/28/2025
Product:	Ax Hybrid Pro 2.0			Page:	4 of 5

⬅

Detector

*Name

Detector

Detector Type

Motion Detector

▼

Link All Areas

Once activated, it will link all areas. Any new areas added subsequently will also be directly linked.

*Linked Area

Area 1

✕

▼

Detector Parameters

Zone Type

Instant Zone

▼

Stay Arm Deactivation

Forbid Bypass on Arming

Silent Alarm

Activation limit

3

Time(s)

⬇

⬆

Detector Contact Mode

NC

NO

Wiring Mode

No EOL

SEOL

DEOL

TEOL

Dual Zone

Pulse Sensitivity

10ms

100ms

250ms

500ms

750ms

EOL Range (TAMPER/ALARM1/AL...

2K2/2K2/6K8

▼

The current zone alarm corresponds to 2K2 EOL.

Expander Zone

Detector

Corresponds to 6K8 EOL.

Double Knock

① Permanent Deactivation

Off

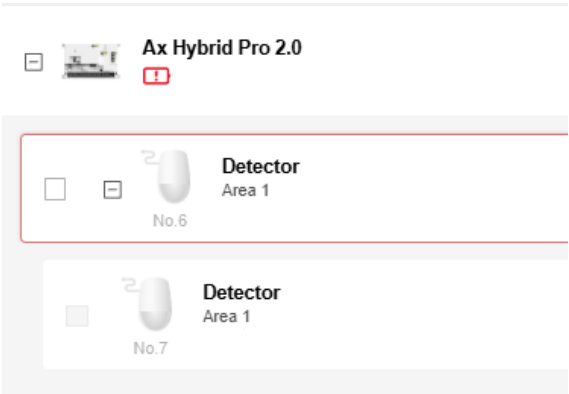
Lid only

Entirely

Save

Cancel

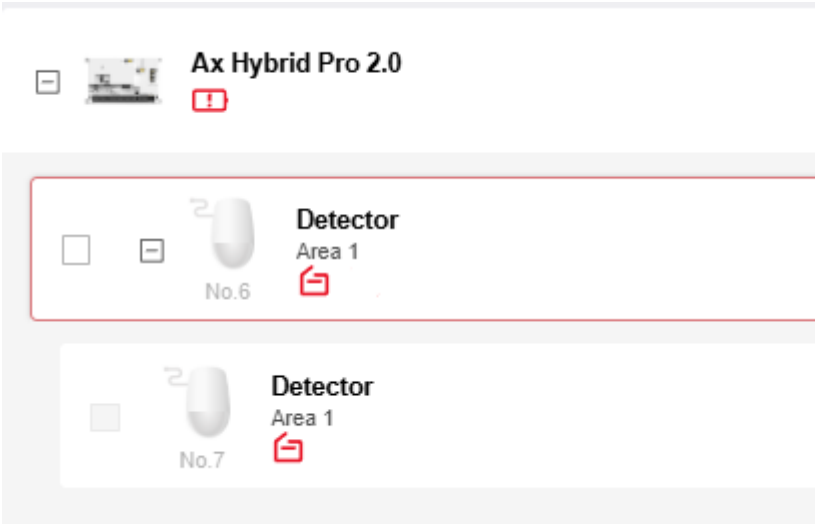
3) You will find 2 detectors in the same zone in the device list.



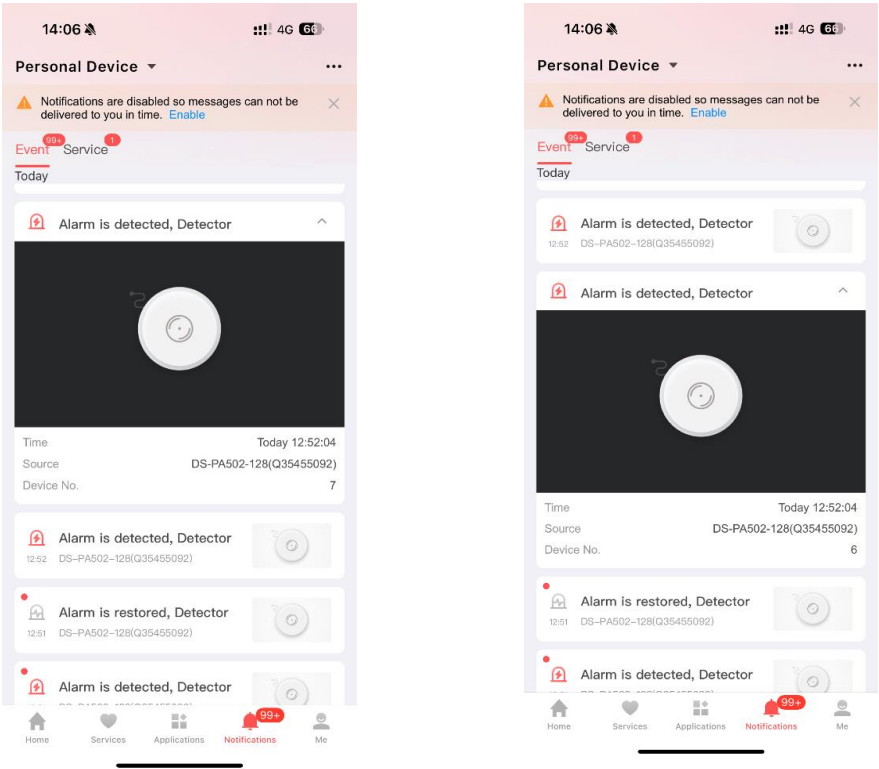
Title:	How to Set Double-Zone Function in Ax Hybrid Pro 2.0	Version:	v1.0	Date:	03/28/2025
Product:	Ax Hybrid Pro 2.0			Page:	5 of 5

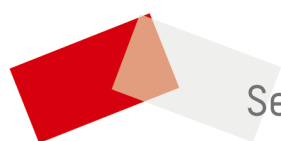
4. Function Confirmation

- 1) Tamper is triggered, 2 detectors will show the tamper status at the same time.



- 2) 2 zone alarm is triggered, you can receive different notification. For example, in the Hik-Connect you can see 2 alarms for 2 detectors (with different device number 6 and 7).





See Far, Go Further