



**How to Login AX PRO Wireless Control Panel by Browser**

<b>Title:</b>	DS-PWA How to Login AX PRO Wireless Control Panel by Browser	<b>Version:</b>	v1.0	<b>Date:</b>	08/07/2020
<b>Product:</b>	DS-PWA Series AX PRO Wireless Security Control Panel			<b>Page:</b>	1 of 2

## Preparation

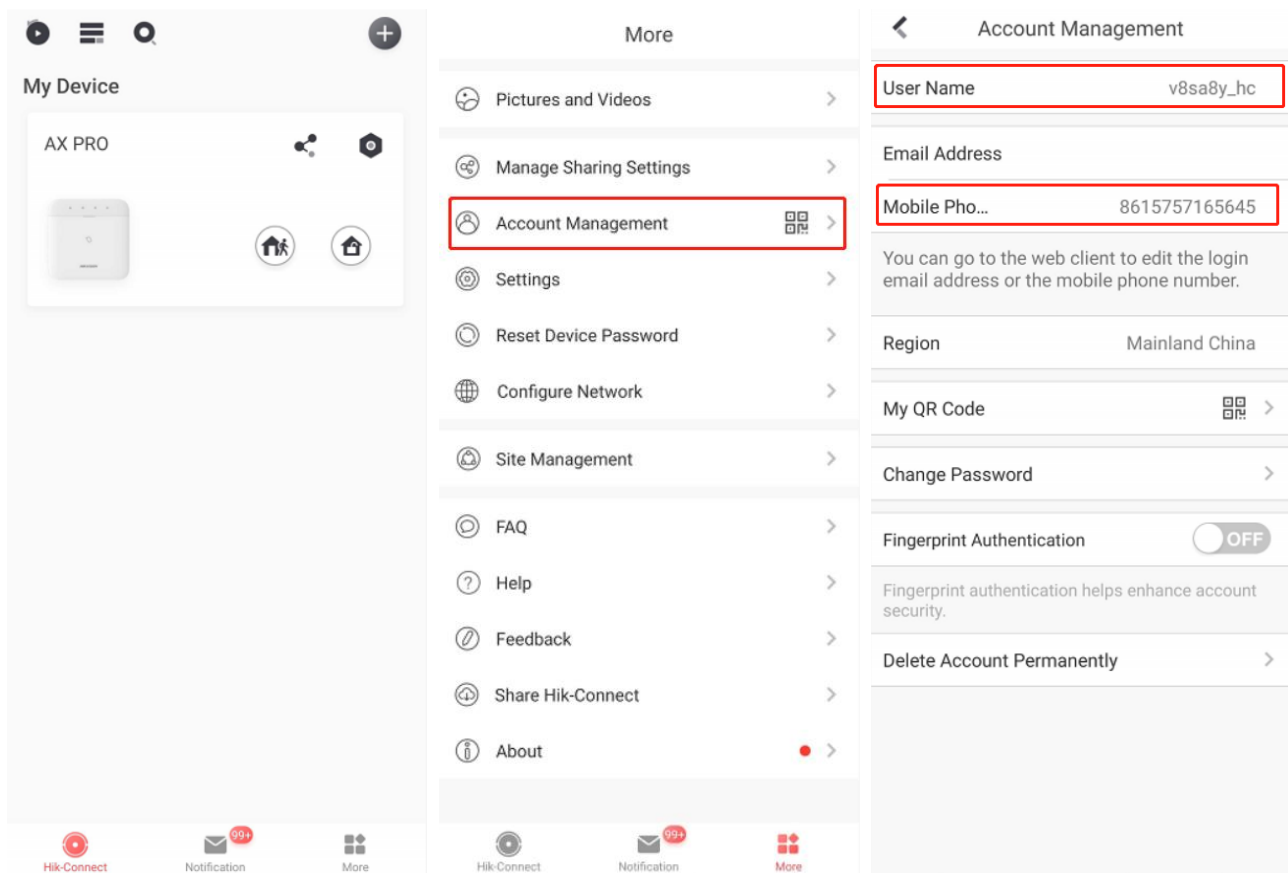
1. DS-PWA Series AX PRO Wireless Security Control Panel
2. IE explorer
3. App Hik-Connect

### How to Login AX PRO Wireless Control Panel by Browser

For AX PRO Panel, Login by Browser need use Hik-Connect account and password, so you need add the device to Hik-connect at first.

#### 1. Hik Connect Account and Password

- 1) Add the Device to Hik-Connect at first
- 2) Select More—Account Management—User Name or Mobile Phone all can used to be account



## 2. Login AX PRO Wireless Control Panel by Browser

### 1) Search Device IP with SADP

SADP interface showing a table of online devices. The table has columns: ID, Device Type, Status, IPv4 Address, Port, Enhanced SD..., Software Vers..., IPv4 Gateway, and HTTP Po. The first device (ID 007) is highlighted in blue, and its IP address 10.9.96.66 is circled in red. The second device (ID 069) is also visible.

ID	Device Type	Status	IPv4 Address	Port	Enhanced SD...	Software Vers...	IPv4 Gateway	HTTP Po
007	DS-PWA96-M-WE	Active	10.9.96.66	8000	N/A	V1.2.0build 2...	10.9.96.254	80
069	DS-PWA32-HSR	Active	10.9.96.111	8000	N/A	V1.0.6build 2...	10.9.96.254	80

### 2) Use Browser Login Panel IP, account and password is Hik-Connect account and password.

Browser login page for Hikvision. The browser address bar shows 10.9.96.50/doc/page/login.asp. The login form has fields for username (v8saBy\_hc) and password, and a Login button.

AX PRO configuration page. The browser address bar shows 10.9.96.66/doc/page/config.asp. The page shows user information for Administrator and Operator, AX PRO Status, and Device Status tables.

**AX PRO Status**

- External Power Supply: Connected
- Wired Network: Connected
- WiFi: Connected/3Gedu...
- Cellular Data Network: Disconnected/No...
- Battery: 100%
- Lid Status: Closed
- Wireless Noise Level: 35dBm
- Cloud Connection Status: Connected

**Device Status**

No.	Device Types	Total	Devices in fault	Devices ok
1	Zone	2	0	2
2	Sounder	0	0	0
3	Keypad	0	0	0
4	Tag Reader	0	0	0
5	Repeater	0	0	0
6	Relay Module/Wall Switch	0	0	0

**Area**

No.	Area Name	Area Status
1	Area 1	Disarmed
2	Area 2	Disarmed
3	Area 3	Disarmed
4	Area 4	Disarmed
5	Area 5	Disarmed
6	Area 6	Disarmed



See Far, Go Further