



How to use intercom function of alarm sounder in HCP

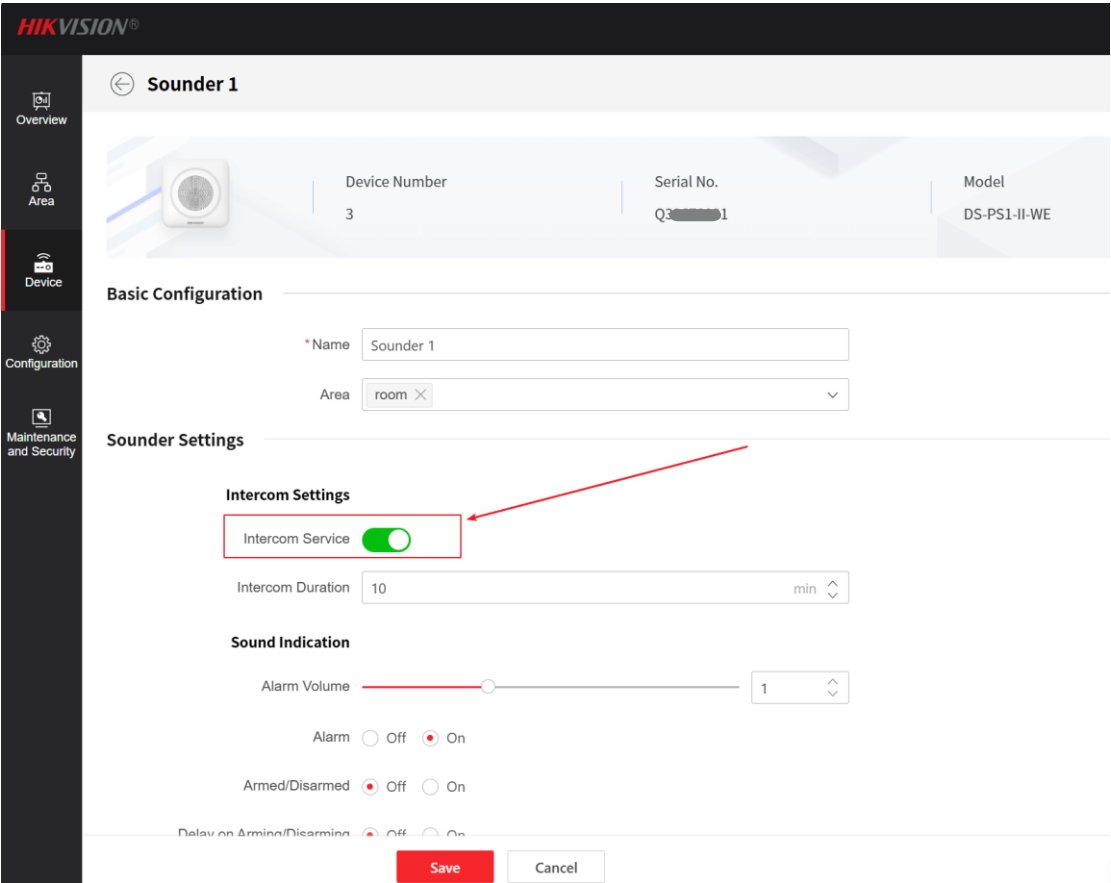
Title:	How to use intercom function of alarm sounder in HCP	Version:	V1.3.0 build 250430	Date:	20/6/2025
Product:	Alarm panel: DS-PWA96-M-WE, Sounder: DS-PS1-II-WE			Page:	1 of 7

Preparation

Please upgrade the firmware of alarm panel to V1.2.9 or above in advance.

How to use intercom function of alarm sounder in HCP

1. Add a sounder to the alarm panel and turn on the sounder's intercom function. (The sounder need to support two-way talk.)
 - 1) Enter device's web, **【Device】** → **【Add Device】** → **【Manually Add Wireless Device】** , Device Type choose Sounder.
 - 2) Enter sounder's configuration, enable the “Intercom Service”.



Title:	How to use intercom function of alarm sounder in HCP	Version:	V1.3.0 build 250430	Date:	20/6/2025
Product:	Alarm panel: DS-PWA96-M-WE, Sounder: DS-PS1-II-WE			Page:	2 of 7

2. Add the alarm panel to HCP via ISUP protocol.

- 1) Enter device's web. **【Configuration】** → **【Alarm Communication】** → **【Alarm Receiving Center】**, click “Enable” and fill in the information of HCP.

The Protocol Type is “ISUP”;

The Server Address is the address of HCP;

The Port can be 7660 by default;

The Device ID and Password are any authentication you set up and will be used when the HCP adds the device.

The screenshot shows the HIKVISION web interface for the Alarm Receiving Center configuration. The left sidebar contains navigation options: Overview, Area, Device, Configuration (highlighted), and Maintenance and Security. The main content area is titled "Alarm Receiving Center" and includes the following settings:

- Alarm Receiving Center:** Two tabs, 1 and 2, with tab 1 selected.
- Enable:** A green toggle switch is turned on.
- Registration Status:** A green checkmark and the text "Online".
- Connection Type:** Radio buttons for Serial Port and IP, with IP selected.
- Protocol Type:** A dropdown menu showing "ISUP".
- Connection Mode:** Radio buttons for TCP and UDP, with TCP selected.
- Communication Channel:** A table with two columns: Network Type and Enable.

Network Type	Enable
Ethernet	<input checked="" type="checkbox"/>
Wi-Fi	<input checked="" type="checkbox"/>
Cellular	<input checked="" type="checkbox"/>
- ISUP Protocol Version:** Radio buttons for v5.0 and v5.1, with v5.0 selected.
- Server Address Type:** Radio buttons for Domain Name and IP, with IP selected.
- Server Address:** A text input field containing "10.9.96.154".
- Port:** A dropdown menu showing "7660".
- Device ID:** A text input field containing "12345678".
- Password:** A text input field with masked characters "*****".

At the bottom of the configuration area, there are two buttons: "Save" (in red) and "Manual Test".

Title:	How to use intercom function of alarm sounder in HCP	Version:	V1.3.0 build 250430	Date:	20/6/2025
Product:	Alarm panel: DS-PWA96-M-WE, Sounder: DS-PS1-II-WE			Page:	3 of 7

- 2) Enter HCP’s web, add Security Control Device.
Access Protocol is “Hikvision ISUP Protocol”;
Device ID and ISUP Login Password are same as “Device ID” and “Password” in device’s Alarm Receiving Center configuration.
Device Name is as you like.
Picture Storage need be enabled.

Device and Server

Encoding Device

Access Control Device

Elevator Control Device

Video Intercom Device

Visitor Terminal

On-Board Device

Query Terminal

Entrance/Exit Control Device

Guidance Terminal

Parking Lot Screen

UVSS

Security Control Device

Fire Protection Device

Portable Enforcement Device

Digital Signage Terminal

Interactive Flat Panel

LED Controller

BACnet Device

Modbus Device

Smart Wall

IP Speaker

Security Inspection Device

Network Transmission Device

Portable Code Scanner

Recording Server

Streaming Server

Intelligent Analysis Server

Area

Add Security Control Device

Basic Information

Device TypeSecurity Control Panel

Access ProtocolHikvision ISUP Protocol

Adding ModeDevice ID

Device ID12345678

Device NameAX PRO

ISUP Login Password

Picture Storage

Storage LocationLocal Storage

Time Zone

Device Time Zone

Manually Set Time Zone

Resource Information

Add Resource to Area

Create Area by Device Name

Existing Area

AddAdd and ContinueCancel

- 3) After configured AX PRO will online in HCP.

Device and Server

Encoding Device

Access Control Device

Blindfold Control Device

All

+ Add

Delete

Change Password

Time Zone

Refresh All

Search

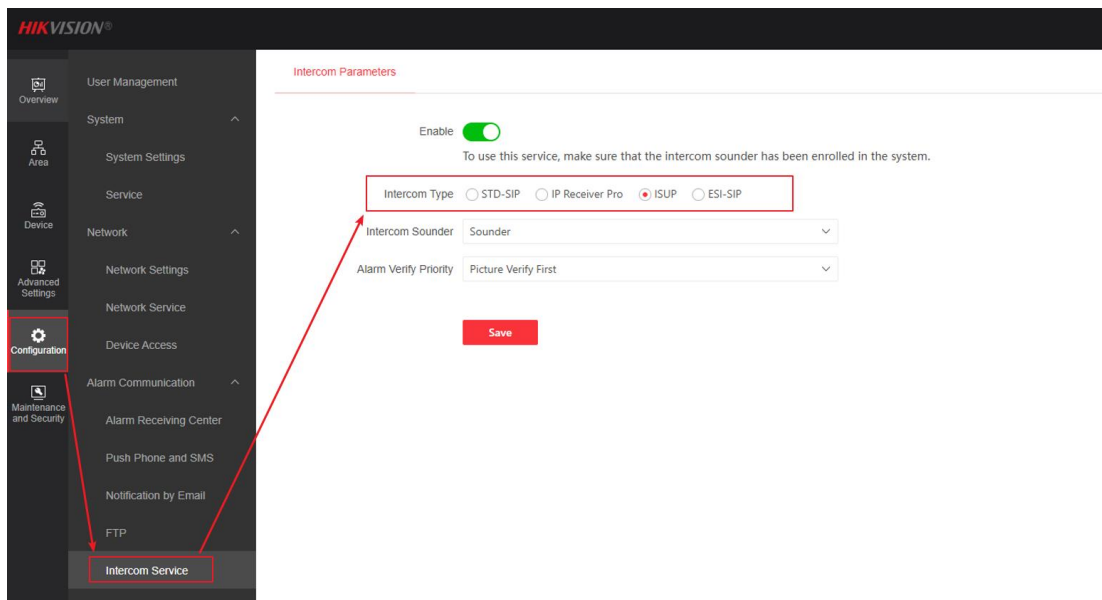
Device Name	Version	Device Type	Site on Hik-Partner Pro	Alarm Inputs	Alarm Outputs	Security Radars	Network Status	Password Strength	Operation
<input type="checkbox"/> AX PRO	WU	V1.3.0 build 250430	Security Control Panel	--	96	106	/	<div>Online</div>	/

Title:	How to use intercom function of alarm sounder in HCP	Version:	V1.3.0 build 250430	Date:	20/6/2025
Product:	Alarm panel: DS-PWA96-M-WE, Sounder: DS-PS1-II-WE			Page:	4 of 7

3. Configure Intercom Service Type of the sounder as ISUP

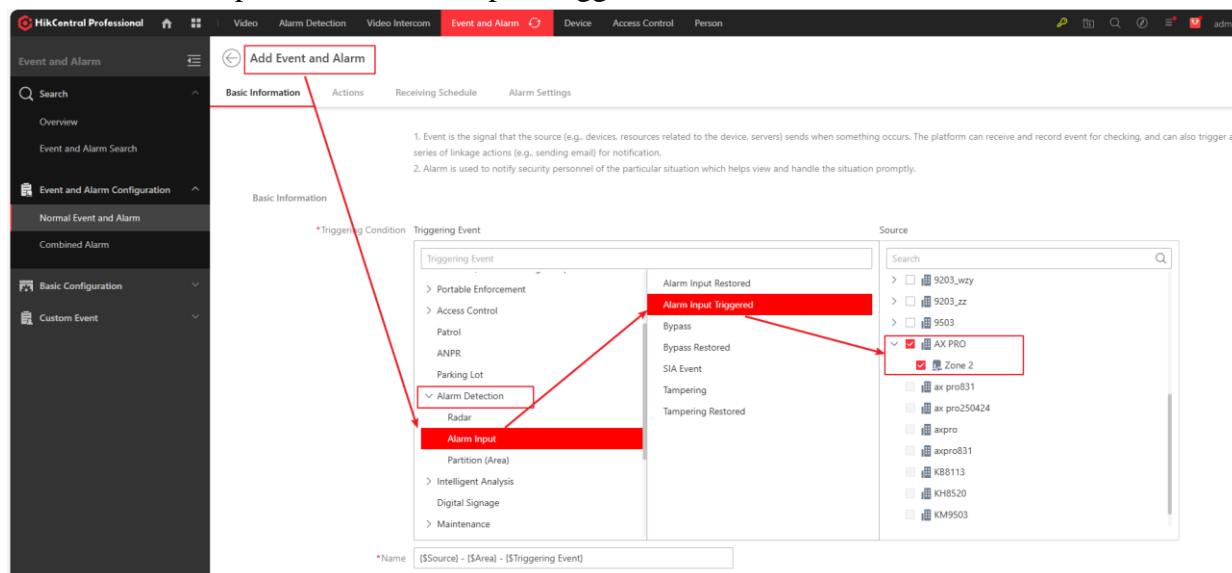
Enter device's web, **【Configuration】** → **【Intercom Service】** → **【Intercom Parameters】**, Click “Enable”.

There are four types of intercom sounder, we choose ISUP cause device connecting to ARC (HCP) via ISUP.



4. Configure HCP events and link alarm output.

1) Enter HCP's web, **【Event and Alarm】** → **【Event and Alarm Configuration】** → **【Normal Event and Alarm】** → **【Add】**. For “Triggering Event”, we need choose **【Alarm Detection】** → **【Alarm Input】** → **【Alarm Input Triggered】**, check the device and zones.



Title:	How to use intercom function of alarm sounder in HCP	Version:	V1.3.0 build 250430	Date:	20/6/2025
Product:	Alarm panel: DS-PWA96-M-WE, Sounder: DS-PS1-II-WE			Page:	5 of 7

- 2) For “Actions”, Click **【Add Linkage Action】** → **【Link Alarm Output】** , link the sounder to the triggered event.

Actions

Receiving Schedule

To avoid missing alarms, make sure the event receiving schedule covers the

☐ Event Receiving Schedule ☒ Schedule Template

All-Day Template View

☐ Event Based

Alarm Settings

Trigger Alarm ☐

Add Linkage Action

- Trigger Recording
- Captured Picture
- Create Tag
- Link Access Point
- Link Alarm Input
- Link Alarm Output**
- Link Alarm Partition (Area)
- Trigger PTZ
- Link Optimus Resource
- Send Email
- Trigger User-Defined Event
- Link Printer
- Trigger Remaining Open for Entran...
- Link Speaker Unit
- Apply Notice to Indoor Station
- Send HTTP Request
- Link Modbus Resource

Add **Add and Continue** Cancel

- 3) Click “Add”, select the sounder and configure the Linkage Status and Alarm Output Closing Method.

Actions

Add Linkage Action

Link Alarm Output

Up to 64 alarm outputs can be selected as alarm linkage.

+ Add Delete All

Alarm Output	Area	Linkage Status	Alarm Output Closing Method	Operation
Sounder 1	AX PRO	On	Manually Close	

- 4) Check the “Trigger Alarm” and “Enable Pop-up Window”. Click “Add”.

Alarm Settings

Trigger Alarm ☒

Alarm Priority High

Recipients

Search

☒ All Users

☒ admin

Enable Pop-up Window ☒

Trigger Emergency ☐

Link Map ☐

Display on Smart Wall ☐

Audible Alarm ☐

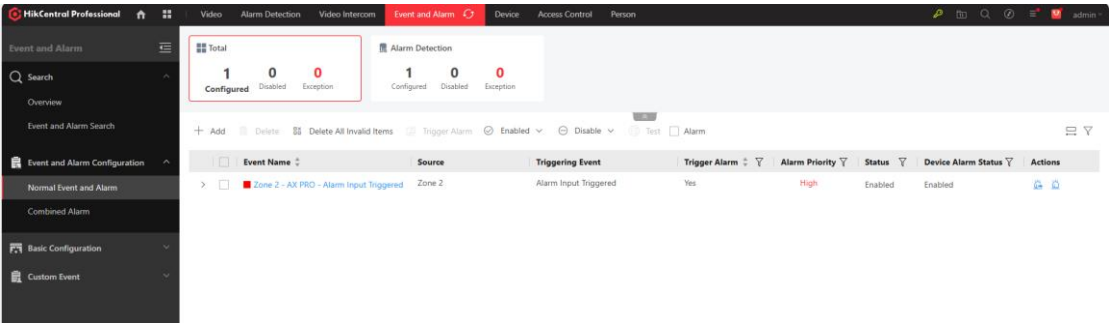
Restrict Alarm Handling Time ☐

Custom Alarm Receiving ☐

Add **Add and Continue** Cancel

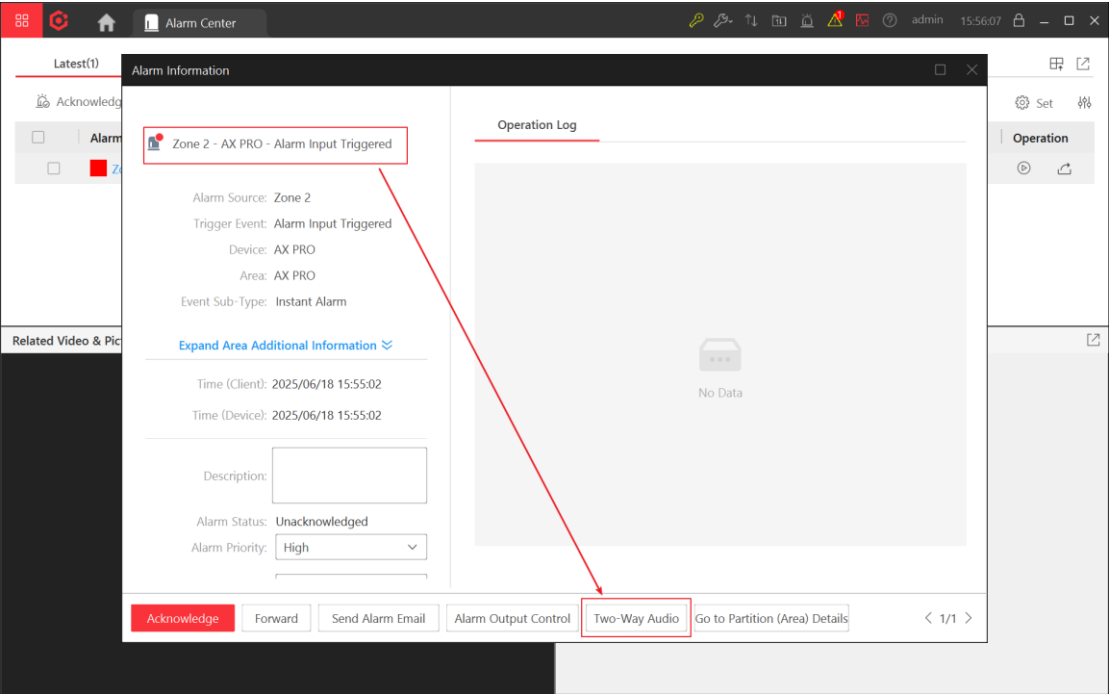
Title:	How to use intercom function of alarm sounder in HCP	Version:	V1.3.0 build 250430	Date:	20/6/2025
Product:	Alarm panel: DS-PWA96-M-WE, Sounder: DS-PS1-II-WE			Page:	6 of 7

5) There will be a configured event in the event list.



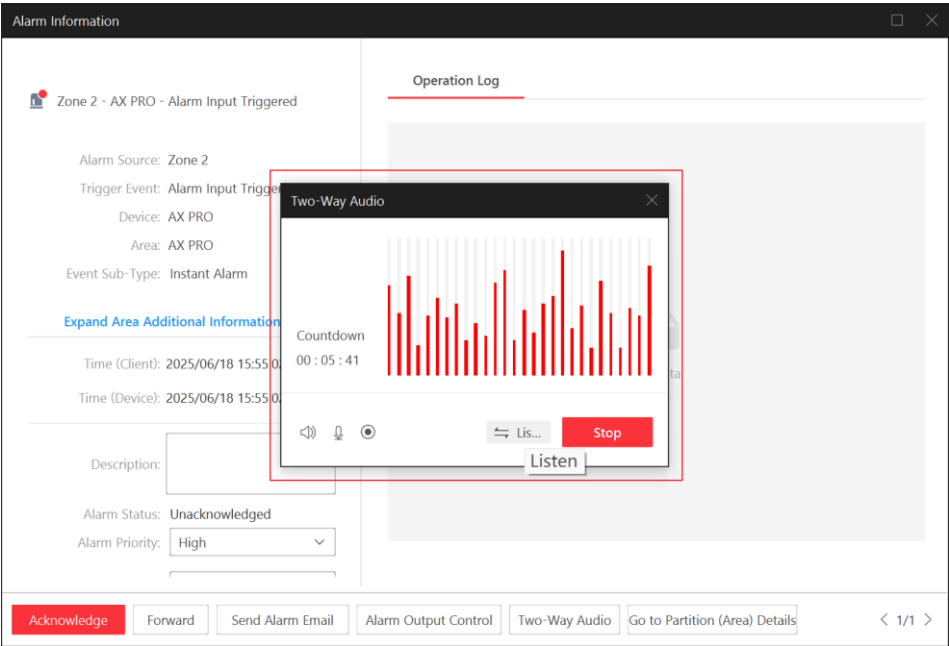
5. When the HCP Control Client receives the alarm information, you can choose Two-Way Audio. The DS-PS1-II-WE sounder is a half-duplex sounder, which only supports one-way intercom at the same time.

You can manually switch the talking or listening modes during the intercom.

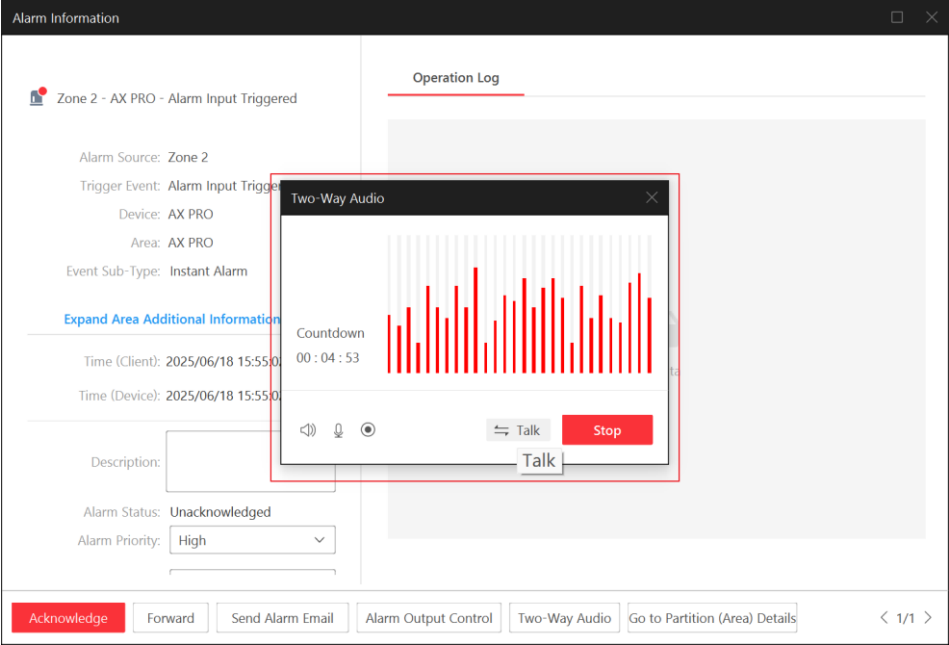


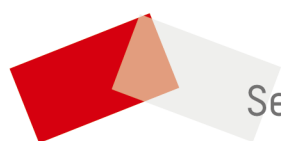
Title:	How to use intercom function of alarm sounder in HCP	Version:	V1.3.0 build 250430	Date:	20/6/2025
Product:	Alarm panel: DS-PWA96-M-WE, Sounder: DS-PS1-II-WE			Page:	7 of 7

Listen mode:



Talk mode:





See Far, Go Further