



How to Open the Door with PIN Code in MinMoe Terminal

Title:	How to Open the Door with PIN Code in MinMoe Terminal	Version:	v1.0	Date:	28/01/2021
Product:	Access Control			Page:	1 of 4

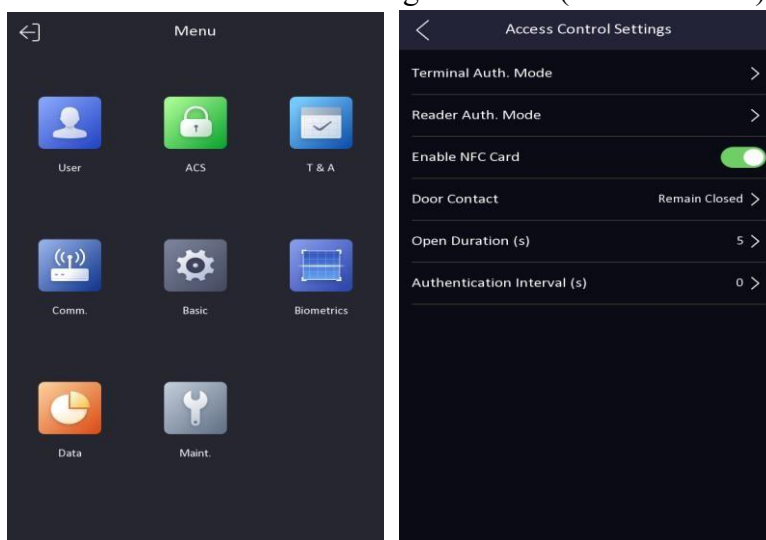
Preparation

This document displays guidance on how to configure PIN Code in IVMS4200 software and open door with it on MinMoe access control terminal.

How to open the door with PIN Code in MinMoe Terminal

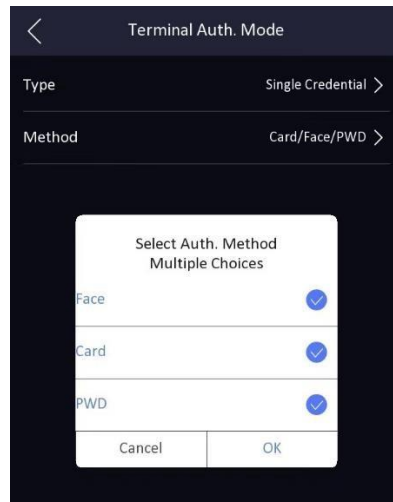
1. Enable opening the door with PIN Code on the device

- 1) Long press the screen of device and then slide left (or right) to enter the menu.
- 2) Enter the Access Control Settings interface (Menu → ACS)



- 3) Go on with the Terminal Auth. Mode and select Type (Single Credential) and Method (must tick PWD).

Title:	How to Open the Door with PIN Code in MinMoe Terminal	Version:	v1.0	Date:	28/01/2021
Product:	Access Control			Page:	2 of 4



2. Set a PIN Code for person

Add the device in 4200, add the person with PIN Code and apply the information of this person to device.

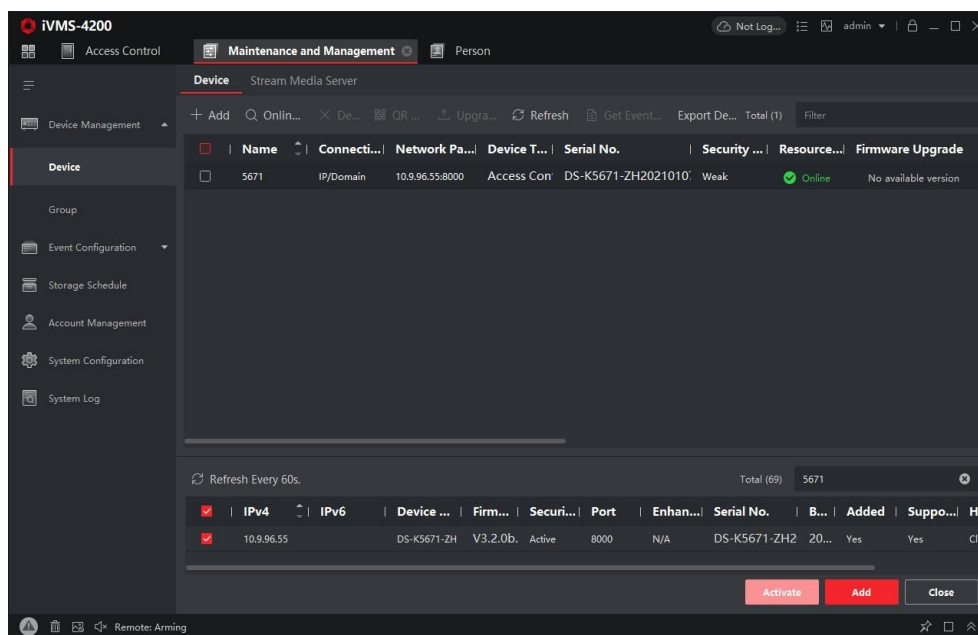


Fig. 1 Add the device in 4200

Title:	How to Open the Door with PIN Code in MinMoe Terminal	Version:	v1.0	Date:	28/01/2021
Product:	Access Control			Page:	3 of 4

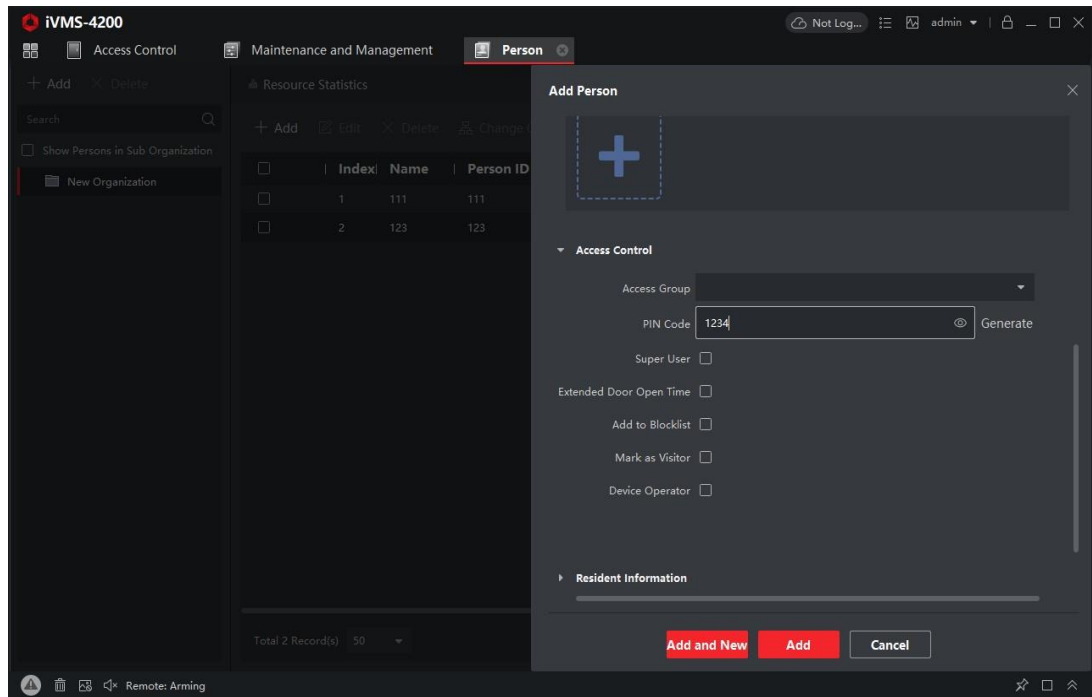


Fig. 2 Add the person and set PIN Code

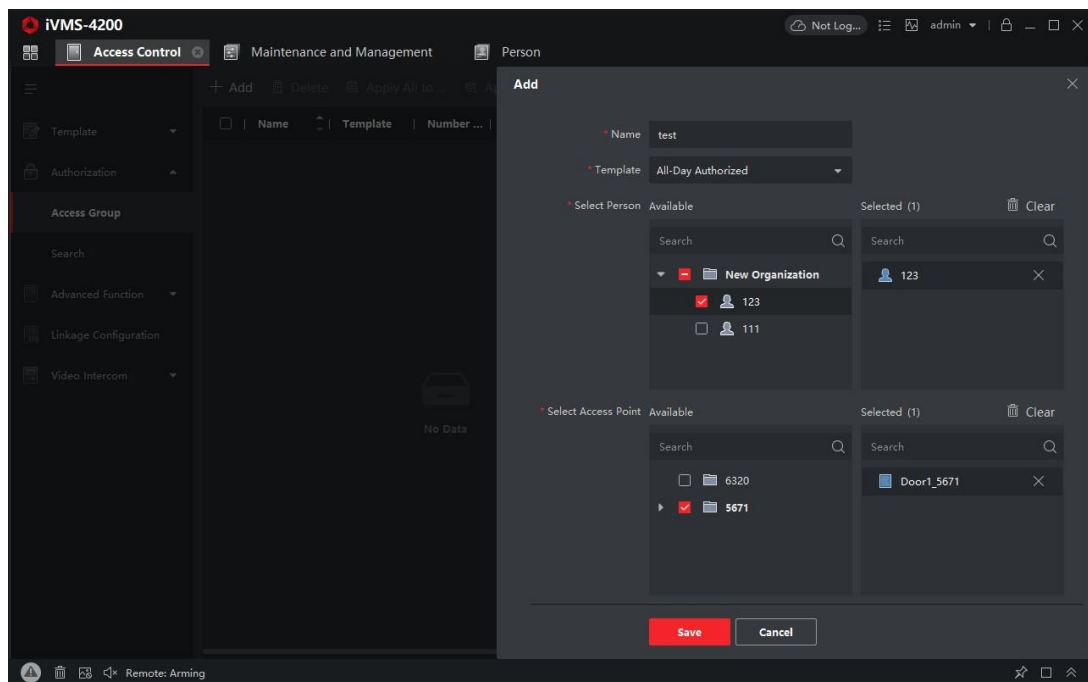


Fig. 3 Apply the changes to device

Title:	How to Open the Door with PIN Code in MinMoe Terminal	Version:	v1.0	Date:	28/01/2021
Product:	Access Control			Page:	4 of 4

3. Open the door with PIN Code

- 1) Enter the interface on the device where we can input PIN Code (click the keypad)

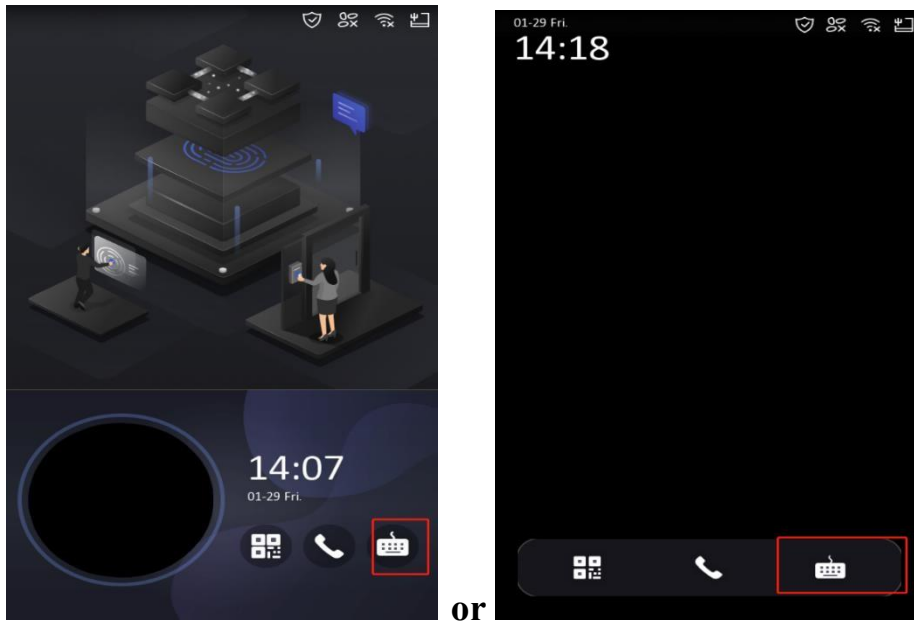
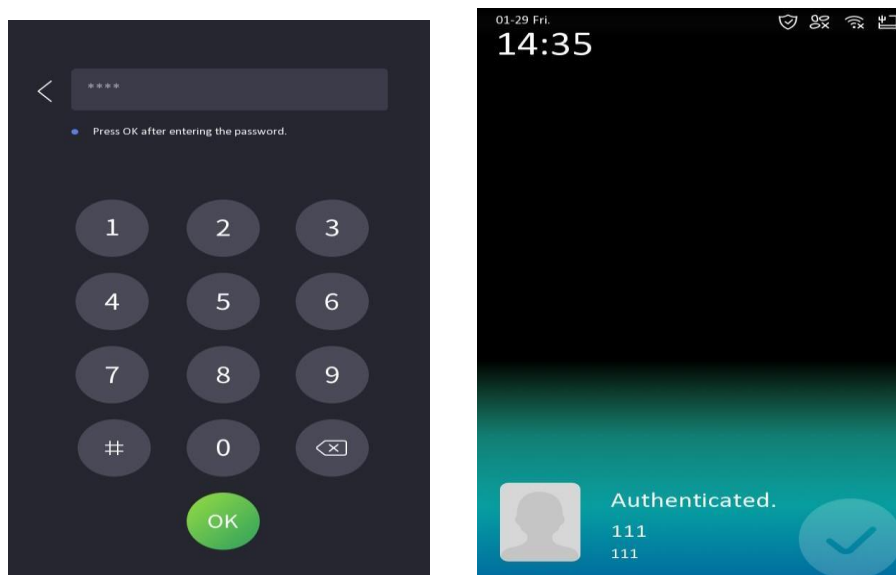
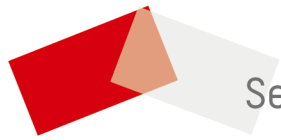


Fig. 1 screen with advertisement

Fig. 2 screen without advertisement

- 2) Input the PIN Code to open the door.





See Far, Go Further